



Maretti Lighting
Bolderweg 7

1332 AX Almere
the Netherlands

T +31 (0) 36 532 66 12
F +31 (0) 36 532 17 35

E info@maretti.com
W www.maretti.com

Maretti Lighting is well-known in the World of interior design. In businesses, homes, store chains, and hospitality facilities all over the world, Maretti is unmistakable present with its project lighting that does more than just provide light. We make lighting an essential part of the interior. Maretti stands for stylish top quality and trendsetting design, modern, timeless and most of all, original.

Maretti Lighting works with all the top brands in the lighting industry, but we are especially notable for our own large product line and introduce our own brand name "Maretti". Our production team distinguishes itself time and time again with unique innovations from our own atelier and therefore our projects exude an entirely unique identity.

© Copyright Maretti Projectverlichting.

Our IM was made with the greatest of care. Nevertheless, the colours displayed in the IM may differ slightly from the real colours because of the printing process. Colour, size and range are subject to change. Nothing from this IM may be copied, reproduced and/or published by print, photocopy or in any other way without Maretti Lighting's written permission. All product and design copyrights belong to Maretti Lighting.

GUARANTEE TERMS AND CONDITIONS

The other party should inspect the delivered items immediately upon receipt with regard to its soundness. Entitlements to repair or replacement only exist if the other party

- In the case of visible defects, informs MPV of them immediately.

- In the case of defects that are not visible, informs MPV in writing of the defects, within 2 working days after the day the defects were found, or in all reason could have been found and furthermore demonstrates that the MPV instructions for use, maintenance and operation were followed, whilst the defects are not the consequence of normal wear and tear, misuse, negligence, accident, exceeding the limits prescribed by the MPV or by the legal safety regulations, or, in the case of a repair or change without MPV's consent or the consent of its recognised repairer, there will be no entitlement to repairs or replacement. The parts that have to be replaced must be made available free of charge to MPV. Noncompliance by the other party to one or more of its obligations will release MPV of all its guarantee obligations. In the case of assembly of the other party's own products by Maretti, MPV will release itself from all guarantee stipulations. Moreover, our general delivery terms and conditions are applicable. These can be obtained from Maretti or can be downloaded from www.maretti.com

The installation must be done by a competent installer. Maretti recommends that your (outside) lighting and fixtures are inspected and maintained annually.

D: Für Garantiebedingungen bitte lesen Sie unsere Webseite www.maretti.com
E: Consulte nuestro sitio web para las condiciones de garantía www.maretti.com
FR: Consultez notre site web pour les conditions de garantie www.maretti.com
NL: Voor garantievoorwaarden zie onze website www.maretti.com

14.6393.COLOUR

IMPACT LED PLAFONNIÈRE



BLACK GREY

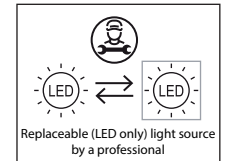
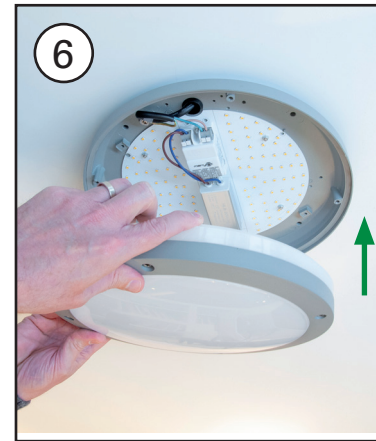
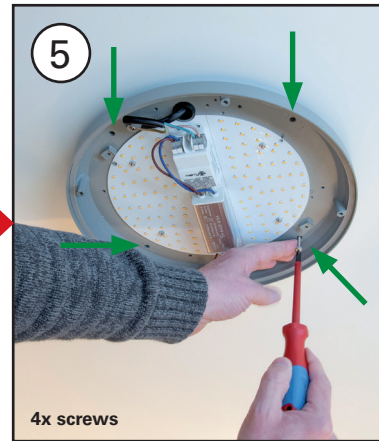
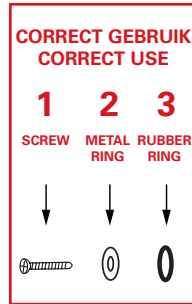
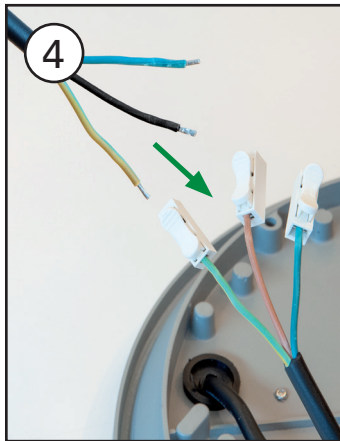
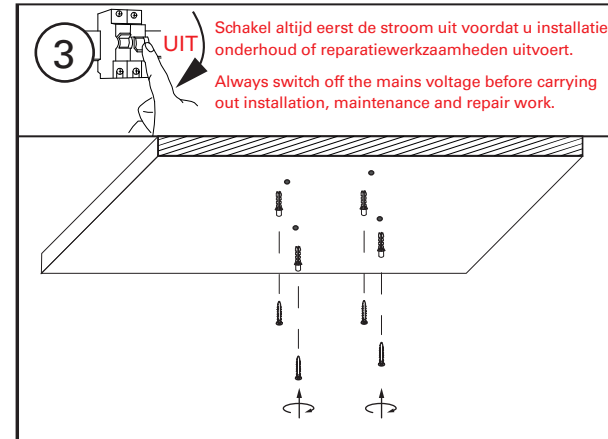
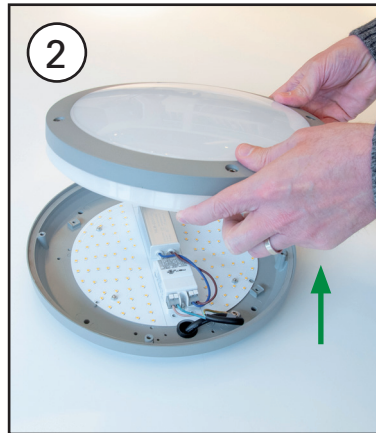
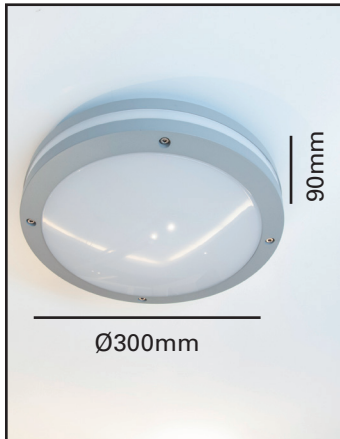


IMPACT RESISTANCE: IK10

230 VAC	VOLTAGE	>0,9	POWER FACTOR	80lm/W	LUMEN/W	<0.5s	WARM-UP TIME TO 60%	CE	CE MARK
20W	WATTAGE	DIM	NOT DIMMABLE	INDOOR	INDOOR	99%	1000H LUMEN MAINTENANCE		
0W	STANDBY POWER	Ra 80	CRI	IP65	IP RATING	≤6	MAC ADAM STEP (SDCM)		
	DRIVER INCL.	3000 K	KELVIN	50.000 hours	LIFETIME LED		EARTHING		
	LED INCL.	1600 lm	LUMEN	50.000	SWITCHING CYCLES	-40~+60°C	ENVIRON. TEMPERATURE		

IMPACT LED PLAFONNIÈRE

INSTRUCTIONS



LET OP:

- Volg en bewaar deze gebruiksaanwijzing.
- Zorg ervoor dat de netspanning uitgeschakeld is voor installatie, reparatie of onderhoud. (Installatie, reparatie en onderhoud uitsluitend door gekwalificeerde personen).
- Om waterdichtheid te verzekeren dient u alle onderdelen handvast aan te draaien.
- Armatuur en keerringen moeten bij montage geheel schoon en droog zijn.
- Dit armatuur niet openen of installeren tijdens regen of hoge luchtvochtigheid.

De fabrikant aanvaardt geen enkele aansprakelijkheid voor letsel of schade als gevolg van een verkeerde toepassing van het armatuur. De fabrikant aanvaardt geen garantie in geval van het niet behandelen van de lampen volgens de richtlijnen van de fabrikant. Als er schade aan elektrische onderdelen te vinden zijn, vraag dan een electricien om het te vervangen.

Onderhoud is behoud:

- Een goede instandhouding van het armatuur is sterk afhankelijk van omgevings- en onderhoudsfactoren. Hierop kunnen wij geen invloed uitoefenen.
- Schakel de elektriciteit uit!
- Gebruik geen bijtende, chemische middelen of schurende schoonmaakmiddelen.
- Armaturen kunnen het beste schoongemaakt worden met een zachte licht vochtige doek en direct daarna met een zachte licht droge doek wrijven i.v.m. 'opdroog plekken'.

NOTE:

- Follow and keep this instructions manual.
- Make sure that the mains voltage is switched off for installation, repair or maintenance. (Installation, repair and maintenance only by qualified persons).
- Make sure all parts are turned hand tight to be sure the item is waterproof.
- Lighting fixture and retaining rings must be clean and dry before assembly.
- Do not open or install this luminaire during rain or highly humid condition.

The manufacturer accepts no liability for any injuries or damages resulting from the incorrect use or installation of the fixture. Any operation performed on the fixture that is not in accordance with instructions will void manufacturer's warranty. If you find any damage to the electrical parts, please ask a qualified electrician to replace it.

Maintenance is preservation:

- A good preservation of the fixture is highly dependent on environmental factors and maintenance. We cannot exercise any influence on this.
- Switch off the mains voltage before you begin.
- Do not use strong, chemicals or abrasive cleaners.
- Luminaires are best cleaned with a slightly damp soft cloth and then immediately wipe with a dry soft cloth to prevent stains.