



MARETTI LIGHTING



Maretti Lighting
Bolderweg 7

1332 AX Almere
the Netherlands

T +31 (0) 36 532 66 12

E info@maretti.com
W www.maretti.com

Maretti Lighting is well-known in the World of interior design. In businesses, homes, store chains, and hospitality facilities all over the world, Maretti is unmistakable present with its project lighting that does more than just provide light. We make lighting an essential part of the interior. Maretti stands for stylish top quality and trendsetting design, modern, timeless and most of all, original.

Maretti Lighting works with all the top brands in the lighting industry, but we are especially notable for our own large product line and introduce our own brand name "Maretti". Our production team distinguishes itself time and time again with unique innovations from our own atelier and therefore our projects exude an entirely unique identity.

© Copyright Maretti Projectverlichting.

Our IM was made with the greatest of care. Nevertheless, the colours displayed in the IM may differ slightly from the real colours because of the printing process. Colour, size and range are subject to change. Nothing from this IM may be copied, reproduced and/or published by print, photocopy or in any other way without Maretti Lighting's written permission. All product and design copyrights belong to Maretti Lighting.

GUARANTEE TERMS AND CONDITIONS

The other party should inspect the delivered items immediately upon receipt with regard to its soundness. Entitlements to repair or replacement only exist if the other party

- In the case of visible defects, informs MPV of them immediately.

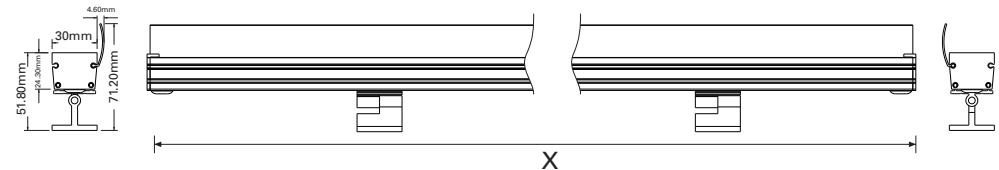
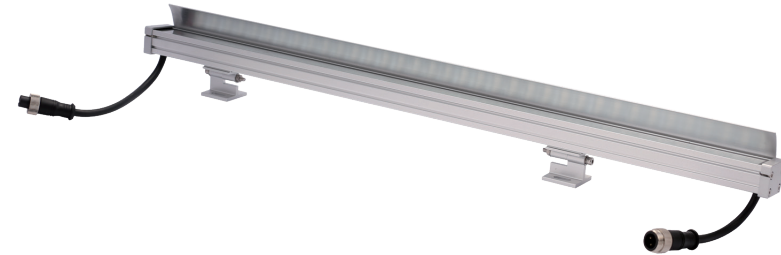
- In the case of defects that are not visible, informs MPV in writing of the defects, within 2 working days after the day the defects were found, or in all reason could have been found and furthermore demonstrates that the MPV instructions for use, maintenance and operation were followed, whilst the defects are not the consequence of normal wear and tear, misuse, negligence, accident, exceeding the limits prescribed by the MPV or by the legal safety regulations, or, in the case of a repair or change without MPV's consent or the consent of its recognised repairer, there will be no entitlement to repairs or replacement. The parts that have to be replaced must be made available free of charge to MPV. Noncompliance by the other party to one or more of its obligations will release MPV of all its guarantee obligations. In the case of assembly of the other party's own products by Maretti, MPV will release itself from all guarantee stipulations. Moreover, our general delivery terms and conditions are applicable. These can be obtained from Maretti or can be downloaded from www.maretti.com

The installation must be done by a competent installer. Maretti recommends that your (outside) lighting and fixtures are inspected and maintained annually.

D: Für Garantiebedingungen bitte lesen Sie unsere Webseite www.maretti.com
E: Consulte nuestro sitio web para las condiciones de garantía www.maretti.com
FR: Consultez notre site web pour les conditions de garantie www.maretti.com
NL: Voor garantievoorwaarden zie onze website www.maretti.com

14.5225.14	2700K	300mm
14.5230.14	2700K	600mm
14.5235.14	2700K	1000mm
14.5240.14	3000K	300mm
14.5245.14	3000K	600mm
14.5250.14	3000K	1000mm

MINIBAR GENERAL INSTRUCTION MANUAL FOR 2700K / 3000K INSTRUCTIONS 1/3



Art. nr.:	14.5225.14 2700K 14.5240.14 3000K	14.5230.14 2700K 14.5245.14 3000K	14.5235.14 2700K 14.5250.14 3000K
Length (X):	300mm	600mm	1000mm

GENERAL INFORMATION									
DC 24V	VOLTAGE	66	IP		DEGREE BEAM ANGLE 45°	Max. 8m	MAX. LINKABLE		
	LED BULB INCLUDED		INDOOR	Ra>80	CRI		CE MARK		
	DRIVER NOT INCL.		OUTDOOR	40.000 hours	LIFETIME LED		ECO FRIENDLY		

ART. NR.:	14.5225.14	14.5230.14	14.5235.14	14.5240.14	14.5245.14	14.5250.14
WATTAGE	8W	14W	24W	8W	14W	24W
LUMEN	560 lm	980 lm	1680 lm	560 lm	980 lm	1680 lm
END CAPS	2x caps	2x caps	2x caps	2x caps	2x caps	2x caps
KELVIN	2700K	2700K	2700K	3000K	3000K	3000K

DIT PRODUCT BEVAT EEN LICHTBRON VAN ENERGIE-EFFICIËNTIEKLASSE: G
THIS PRODUCT CONTAINS A LIGHT SOURCE OF ENERGY EFFICIENCY CLASS: G

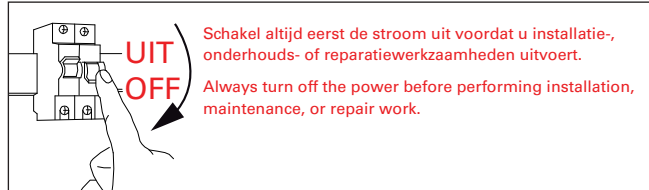


14.5225.14 2700K 300mm
 14.5230.14 2700K 600mm
 14.5235.14 2700K 1000mm

14.5240.14 3000K 300mm
 14.5245.14 3000K 600mm
 14.5250.14 3000K 1000mm

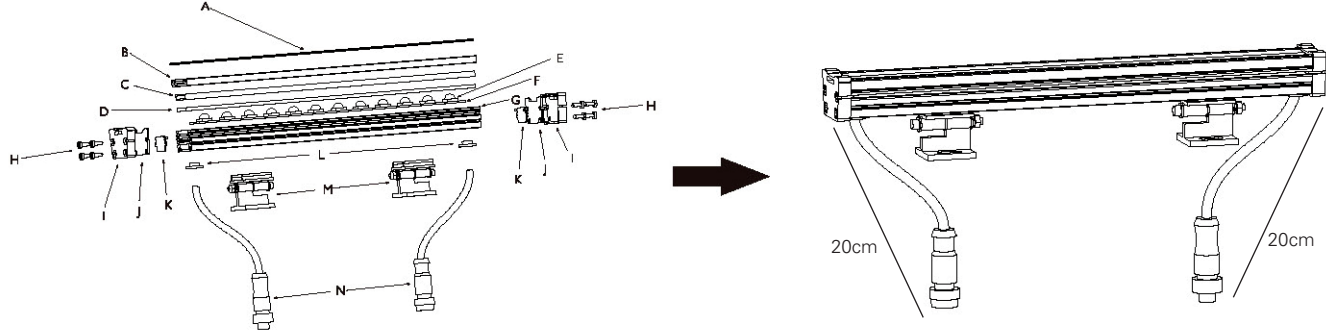
MINIBAR GENERAL INSTRUCTION MANUAL FOR 2700K / 3000K

MOUNTING INSTRUCTIONS 2/3



MINIBAR ACCESSORIES (ORDERED SEPARATELY)			
14.5265.14	MINIBAR	Power cable 200mm for warm white	
14.5275.14	MINIBAR	Extension cable 1000mm for warm white	
LED DRIVER (ORDERED SEPARATELY)			
519.0100.06	LED driver	24VDC	35W IP67
519.0100.05	LED driver	24VDC	60W IP67
519.0100.17	LED driver	24VDC	100W IP67
519.0100.18	LED driver	24VDC	150W IP67

PRODUCT STRUCTURE



Maximum 8m linkable, special circuit design support 8m linear linking

length/ wattage	Quantity of max. connected lengths									
	1	2	3	4	5	6	7	8	9	10
30cm / 8W	8W	16W	24W	32W	40W	48W	56W	64W	72W	80W
60cm / 14W	14W	28W	42W	56W	70W	84W	98W	112W	126W	140W
100cm / 24W	24W	48W	72W	96W	120W	144W				

Total number of connect lines for the purpose of choice Powersupply 35W or 150W.



LET OP: Volg en bewaar deze gebruiksaanwijzing.
 - Zorg ervoor dat de netspanning uitgeschakeld is voor installatie, reparatie of onderhoud. (Installatie, reparatie en onderhoud uitsluitend door gekwalificeerde personen).
 - Voor reparatie of onderhoud uitsluitend originele delen gebruiken. Probeer het product niet zelf te demonteren en te repareren, onjuiste reparaties kunnen het product beschadigen en elektrische schokken veroorzaken wat tot ernstig letsel kan leiden.
 - Gebruik het armatuur alleen binnenshuis.
 - Het armatuur niet in vochtige of natte ruimte gebruiken.
 - Uitsluitend op het etiket aangegeven lichtbronnen gebruiken.

De fabrikant aanvaardt geen enkele aansprakelijkheid voor letsel of schade als gevolg van een verkeerde toepassing van het armatuur.
 De fabrikant aanvaardt geen garantie in geval van het niet behandelen van de lampen volgens de richtlijnen van de fabrikant.
 Als er schade aan elektrische onderdelen te vinden zijn, vraag dan een elektricien om het te vervangen.

Onderhoud is behoud:

Een goede instandhouding van het armatuur is sterk afhankelijk van omgevings- en onderhoudsfactoren. Hierop kunnen wij geen invloed uitoefenen.
 - Schakel voor de zekerheid de elektriciteit uit!
 - Gebruik geen agressieve, schurende of chemische schoonmaakmiddelen.

NOTE: Follow and keep this instructions manual.
 - Make sure that the mains voltage is switched off before installation, reparation or maintenance. (Installation, reparation and maintenance only by qualified persons).
 - Use only original parts for repairs or maintenance. Never attempt to disassemble, repair or alter the product in any way, improper repairs could damage the product causing electrical shocks which may cause serious injury.
 - Use the fixture only indoors.
 - Don't use the fixture in humid or wet areas.
 - Use only suitable light sources indicated on the label.

The manufacturer accepts no liability for any injuries or damages resulting from the incorrect use or installation of the fixture.
 Any operation performed on the fixture that is not in accordance with instructions will void manufacturer's warranty.
 If you find any damage to the electrical parts, please ask a qualified electrician to replace it.

Maintenance is preservation:

A good preservation of the fixture is highly dependent on environmental factors and maintenance. We cannot exercise any influence on this.
 - Make sure that the mains voltage is switched off before you begin.
 - Do not use aggressive, abrasive or chemical cleaners.

"No rights can be derived from the information provided on this Instruction Manual. Information on the Instruction Manual has been compiled with the utmost care and is updated on a continuous basis. Nevertheless Maretti cannot guarantee that all information is free of errors, complete or fully up to date."

14.5225.14 2700K 300mm
 14.5230.14 2700K 600mm
 14.5235.14 2700K 1000mm

14.5240.14 3000K 300mm
 14.5245.14 3000K 600mm
 14.5250.14 3000K 1000mm

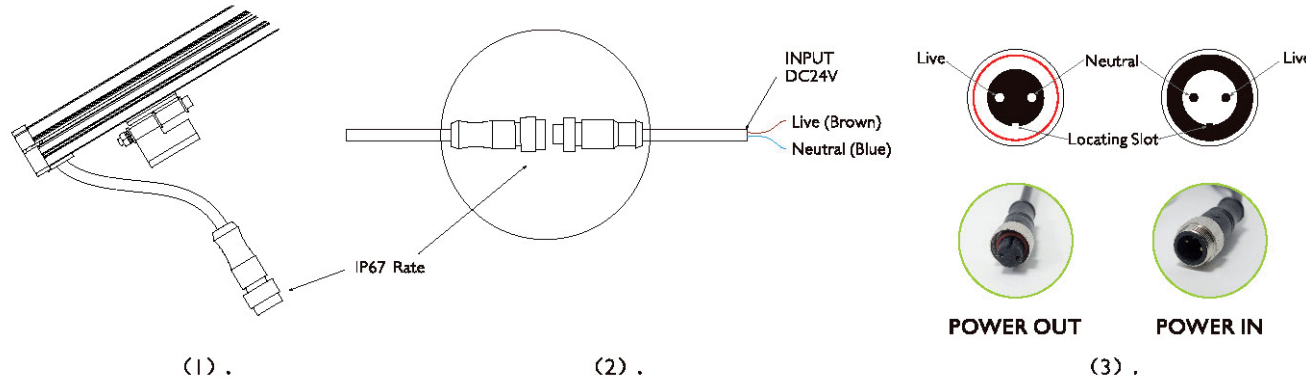
MINIBAR GENERAL INSTRUCTION MANUAL FOR 2700K / 3000K

MOUNTING INSTRUCTIONS 3/3

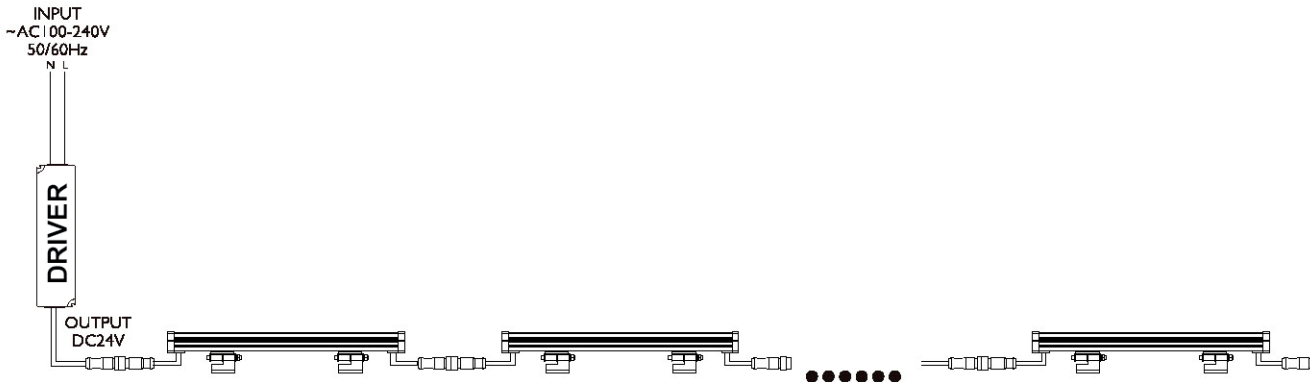


WARM WHITE MINIBAR INSTALLATION INSTRUCTION:

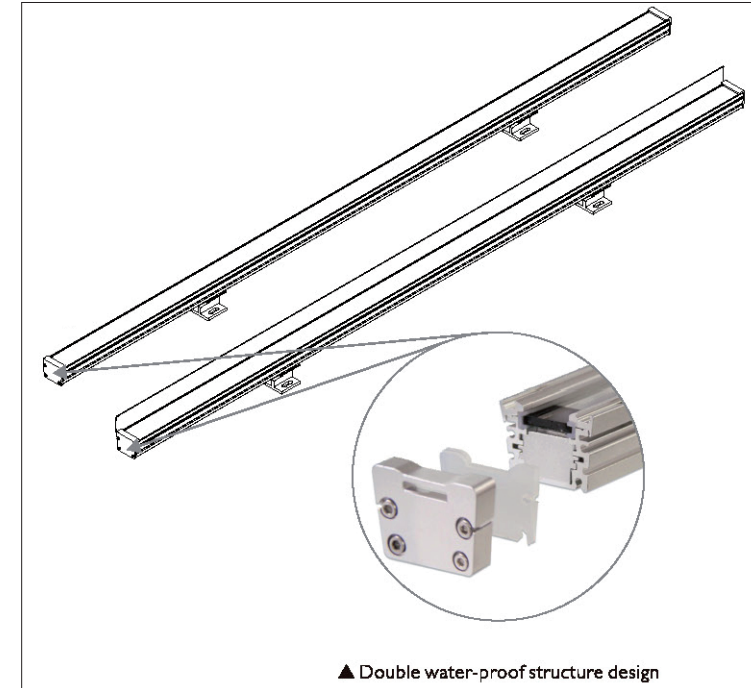
Note: Maximum 8m linkable, special circuit design support 8m linear linking



The Minibar input voltage is DC24V and adopts male & female connector.
 As illustrator above, please plug male & female connectors while locating slots are aligned



Electric power will be transformed to be DC24V by power supply (power supply not included).
 Max total power of linked lights mustn't surpass 150W. At the same time, lights total power must be lower than that of power supply.



▲ Double water-proof structure design

LET OP:

- Volg en bewaar deze gebruiksaanwijzing.
- Zorg ervoor dat de netspanning uitgeschakeld is voor installatie, reparatie of onderhoud. (Installatie, reparatie en onderhoud uitsluitend door gekwalificeerde personen).
- Voor reparatie of onderhoud uitsluitend originele delen gebruiken.
- Armatuur en keerringen moeten bij montage geheel schoon en droog zijn.
- Dit armatuur niet openen of installeren tijdens regen of hoge luchtvochtigheid.

De fabrikant aanvaardt geen enkele aansprakelijkheid voor letsel of schade als gevolg van een verkeerde toepassing van het armatuur. De fabrikant aanvaardt geen garantie in geval van het niet behandelen van de lampen volgens de richtlijnen van de fabrikant. Als er schade aan elektrische onderdelen te vinden zijn, vraag dan een elektricien om het te vervangen.

NOTE:

- Follow and keep this instructions manual.
- Make sure that the mains voltage is switched off for installation, repair or maintenance. (Installation, repair and maintenance only by qualified persons).
- Use only original parts for repairs or maintenance.
- Lighting fixture and retaining rings must be clean and dry before assembly.
- Do not open or install this luminaire during rain or highly humid condition.

The manufacturer accepts no liability for any injuries or damages resulting from the incorrect use or installation of the fixture. Any operation performed on the fixture that is not in accordance with instructions will void manufacturer's warranty. If you find any damage to the electrical parts, please ask a qualified electrician to replace it.