



# MARETTI

L I G H T I N G



Maretti Lighting  
Bolderweg 7

1332 AX Almere  
the Netherlands

T +31 (0) 36 532 66 12

E info@maretti.com  
W www.maretti.com

Maretti Lighting is well-known in the World of interior design. In businesses, homes, store chains, and hospitality facilities all over the world, Maretti is unmistakable present with its project lighting that does more than just provide light. We make lighting an essential part of the interior. Maretti stands for stylish top quality and trendsetting design, modern, timeless and most of all, original.

Maretti Lighting works with all the top brands in the lighting industry, but we are especially notable for our own large product line and introduce our own brand name "Maretti". Our production team distinguishes itself time and time again with unique innovations from our own atelier and therefore our projects exude an entirely unique identity.

© Copyright Maretti Projectverlichting.

Our IM was made with the greatest of care. Nevertheless, the colours displayed in the IM may differ slightly from the real colours because of the printing process. Colour, size and range are subject to change. Nothing from this IM may be copied, reproduced and/or published by print, photocopy or in any other way without Maretti Lighting's written permission. All product and design copyrights belong to Maretti Lighting.

#### GUARANTEE TERMS AND CONDITIONS

The other party should inspect the delivered items immediately upon receipt with regard to its soundness. Entitlements to repair or replacement only exist if the other party

- In the case of visible defects, informs MPV of them immediately.

- In the case of defects that are not visible, informs MPV in writing of the defects, within 2 working days after the day the defects were found, or in all reason could have been found and furthermore demonstrates that the MPV instructions for use, maintenance and operation were followed, whilst the defects are not the consequence of normal wear and tear, misuse, negligence, accident, exceeding the limits prescribed by the MPV or by the legal safety regulations, or, in the case of a repair or change without MPV's consent or the consent of its recognised repairer, there will be no entitlement to repairs or replacement. The parts that have to be replaced must be made available free of charge to MPV. Noncompliance by the other party to one or more of its obligations will release MPV of all its guarantee obligations. In the case of assembly of the other party's own products by Maretti, MPV will release itself from all guarantee stipulations. Moreover, our general delivery terms and conditions are applicable. These can be obtained from Maretti or can be downloaded from [www.maretti.com](http://www.maretti.com)

The installation must be done by a competent installer. Maretti recommends that your (outside) lighting and fixtures are inspected and maintained annually.

D: Für Garantiebedingungen bitte lesen Sie unsere Webseite [www.maretti.com](http://www.maretti.com)  
E: Consulte nuestro sitio web para los condiciones de garantía [www.maretti.com](http://www.maretti.com)  
FR: Consultez notre site web pour les conditions de garantie [www.maretti.com](http://www.maretti.com)  
NL: Voor garantievoorwaarden zie onze website [www.maretti.com](http://www.maretti.com)

12.5111.COLOUR 1M  
12.5113.COLOUR 2M  
12.5115.COLOUR 3M

## DALI TRACKS

### 3-PHASE SERIES

ACCESSORIES (SEE PAGE 2)  
THEY ARE ORDERED SEPARATELY

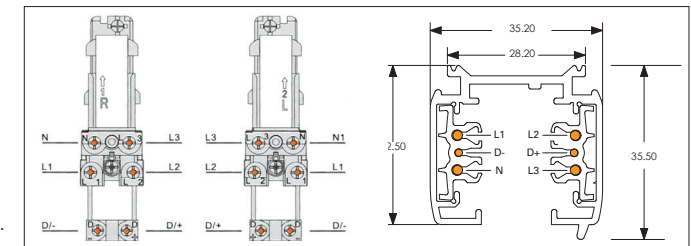


BLACK WHITE

04

05

230V	VOLTAGE
	INDOOR
	CE MARK



Max. wattage:  
16A voor elk circuit / for each circuit.

De wattage limiet voor elk circuit  
The wattage limit for each circuit:  
230V\*16A=3680 wattage.



#### LET OP:

- Volg en bewaar deze gebruiksaanwijzing.
- Zorg ervoor dat de netspanning uitgeschakeld is voor installatie of onderhoud. (Installatie en onderhoud uitsluitend door gekwalificeerde personen).
- Gebruik het armatuur alleen binnenshuis.
- Het armatuur niet in vochtige of natte ruimte gebruiken.

De fabrikant aanvaardt geen enkele aansprakelijkheid voor letsel of schade als gevolg van een verkeerde toepassing van het armatuur. Als er schade aan elektrische onderdelen te vinden zijn, vraag dan een electricien om het te vervangen.

**Onderhoud is behoud:**  
Een goede instandhouding van het armatuur is sterk afhankelijk van omgevings- en onderhoudsfactoren. Hierop kunnen wij geen invloed uitoefenen.

- Schakel voor de zekerheid de elektriciteit uit!
- Gebruik geen bijtende, chemische middelen of schurende schoonmaakmiddelen.

#### NOTE:

- Follow and keep this instructions manual.
- Make sure that the mains voltage is switched off for installation or maintenance. (Installation and maintenance only by qualified persons).
- Use the fixture only indoors.
- Don't use the fixture in humid or wet areas.

The manufacturer accepts no liability for any injuries or damages resulting from the incorrect use or installation of the fixture. If you find any damage to the electrical parts, please ask a qualified electrician to replace it.

**Maintenance is preservation:**  
A good preservation of the fixture is highly dependent on environmental factors and maintenance. We cannot exercise any influence on this.

- Make sure that the mains voltage is switched off before you begin.
- Do not use strong, chemicals or abrasive cleaners.

12.5111.COLOUR 1M  
 12.5113.COLOUR 2M  
 12.5115.COLOUR 3M

# DALI TRACK 3-PHASE SERIES

TRACK SYSTEM ACCESSORIES ARE ORDERED SEPARATELY

2/6

## MAR-TRACK 3-PHASE Mechanical adapter



**COLOUR ARTICLE NUMBER**  
 Black 12.4264.04  
 White 12.4264.05

## MAR-TRACK 3-PHASE Suspension kit EZ-click (1,5M wire)



**COLOUR ARTICLE NUMBER INCL.**  
 Black 12.4272.04 1,5M WIRE  
 White 12.4272.05

## MAR-TRACK 3-PHASE Suspension kit EZ-click (5M wire)



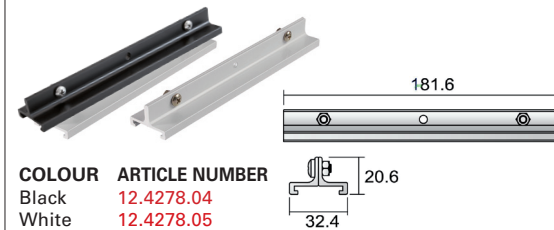
**COLOUR ARTICLE NUMBER INCL.**  
 Black 12.4274.04 5M WIRE  
 White 12.4274.05

## MAR-TRACK 3-PHASE Slot connection tool



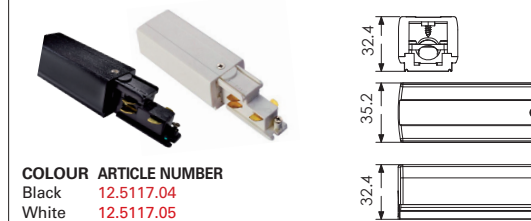
**COLOUR ARTICLE NUMBER**  
 Black 511.0700.02

## MAR-TRACK 3-PHASE Reinforcement plate



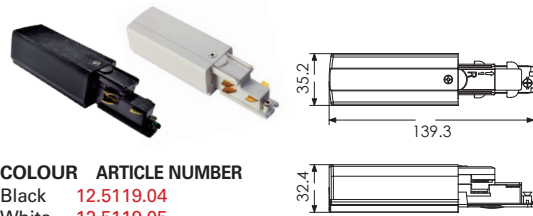
**COLOUR ARTICLE NUMBER**  
 Black 12.4278.04  
 White 12.4278.05

## DALI TRACK 3-PHASE Live End connector LEFT



**COLOUR ARTICLE NUMBER**  
 Black 12.5117.04  
 White 12.5117.05

## DALI TRACK 3-PHASE Live End connector RIGHT



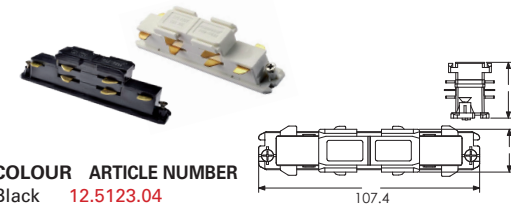
**COLOUR ARTICLE NUMBER**  
 Black 12.5119.04  
 White 12.5119.05

## MAR-TRACK 3-PHASE End cap



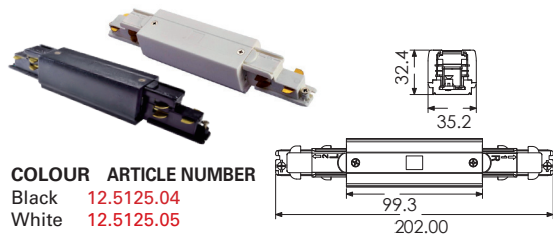
**COLOUR ARTICLE NUMBER**  
 Black 12.4298.04  
 White 12.4298.05

## DALI TRACK 3-PHASE Electrical mini joiner



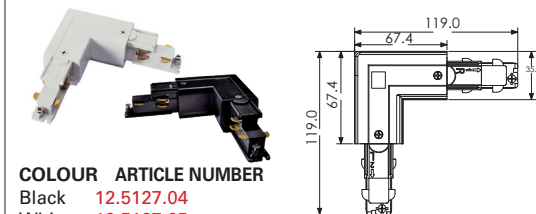
**COLOUR ARTICLE NUMBER**  
 Black 12.5123.04  
 White 12.5123.05

## DALI TRACK 3-PHASE Straight connector



**COLOUR ARTICLE NUMBER**  
 Black 12.5125.04  
 White 12.5125.05

## DALI TRACK 3-PHASE corner connector LEFT



**COLOUR ARTICLE NUMBER**  
 Black 12.5127.04  
 White 12.5127.05

"No rights can be derived from the information provided on this Instruction Manual. Information on the Instruction Manual has been compiled with the utmost care and is updated on a continuous basis. Nevertheless Maretti cannot guarantee that all information is free of errors, complete or fully up to date."

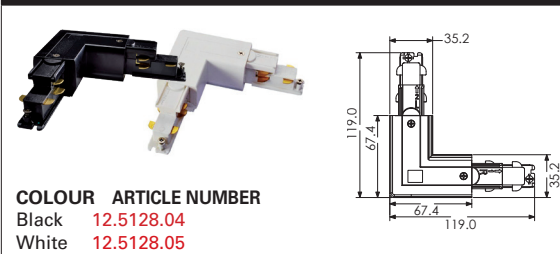
12.5111.COLOUR 1M  
 12.5113.COLOUR 2M  
 12.5115.COLOUR 3M

# DALI TRACK 3-PHASE SERIES

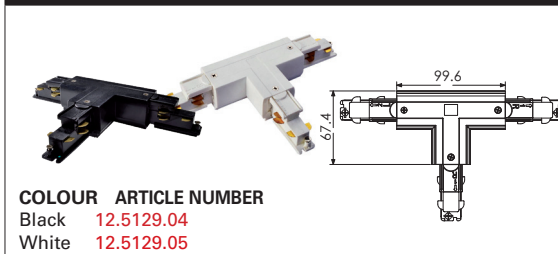
TRACK SYSTEM ACCESSORIES ARE ORDERED SEPARATELY

3/6

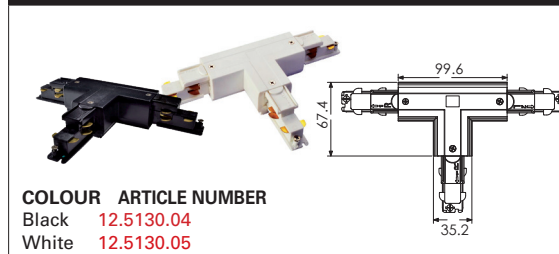
**DALI TRACK 3-PHASE corner connector RIGHT**



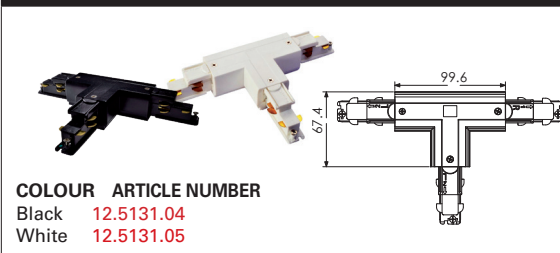
**DALI TRACK 3-PHASE T-connector LEFT1**



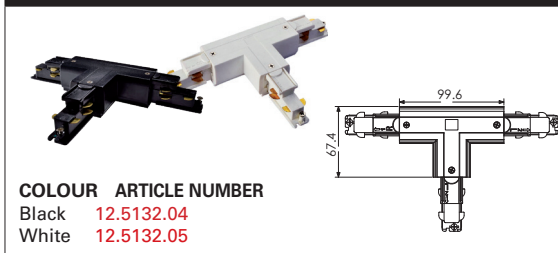
**DALI TRACK 3-PHASE T-connector LEFT2**



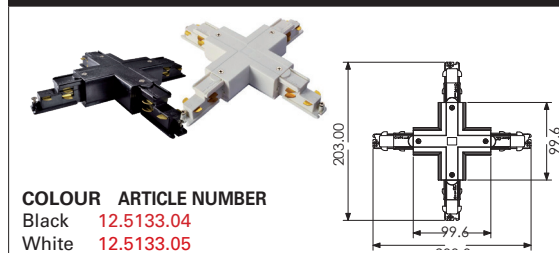
**DALI TRACK 3-PHASE T-connector RIGHT1**



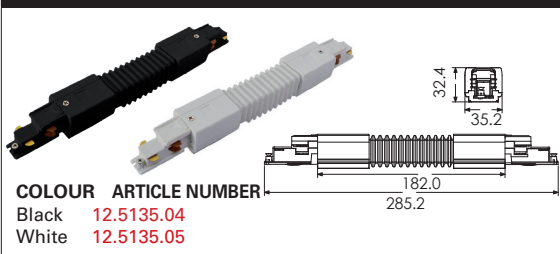
**DALI TRACK 3-PHASE T-connector RIGHT2**



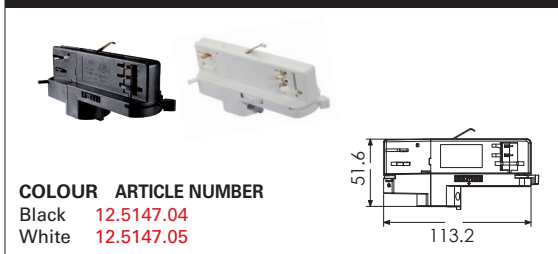
**DALI TRACK 3-PHASE X-connector**



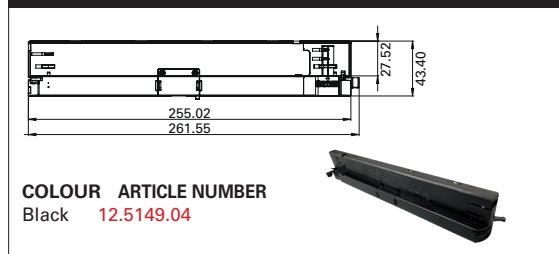
**DALI TRACK 3-PHASE Flexible connector**



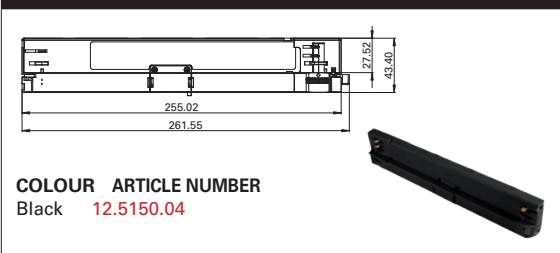
**DALI TRACK 3-PHASE Adapter**



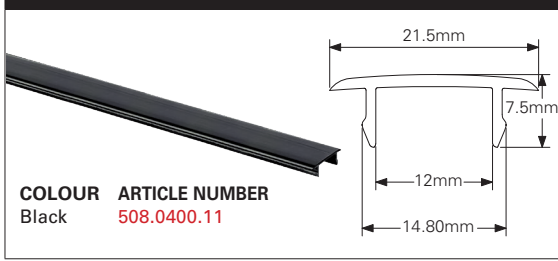
**DALI TRACK 3-PHASE driver 325-700mA 20-44VDC 6,5-31W**



**DALI TRACK 3-PHASE driver 300-1050mA 5-42VDC 1,5-40W**



**MAR-TRACK COVER STRIP 3M BLACK**



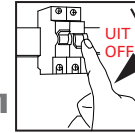
"No rights can be derived from the information provided on this Instruction Manual. Information on the Instruction Manual has been compiled with the utmost care and is updated on a continuous basis. Nevertheless Maretti cannot guarantee that all information is free of errors, complete or fully up to date."

12.5111.COLOUR 1M  
 12.5113.COLOUR 2M  
 12.5115.COLOUR 3M

# DALI TRACK 3-PHASE SERIES

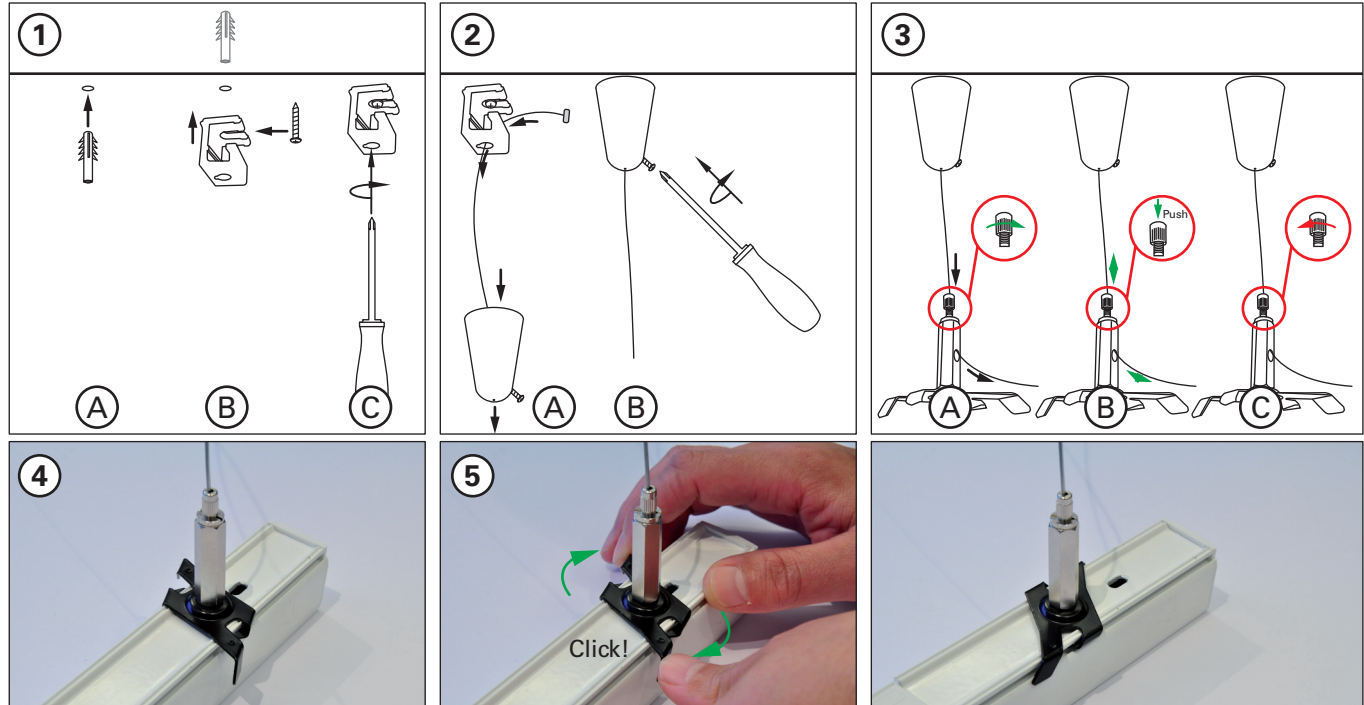
## EXAMPLE OF A TRACK SYSTEM CONNECTION DIAGRAM

4/6



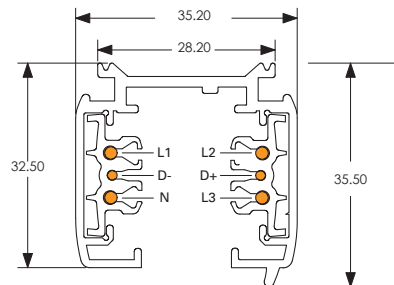
Schakel altijd eerst de stroom uit voordat u installatie-, onderhoud of reparatiewerkzaamheden uitvoert.  
 Always switch off the mains voltage before carrying out installation, maintenance and repair work.

SUSPENSION KIT IS ORDERED SEPARATELY  
 12.4272.colour Incl. 1,5m wire (04= black / 05= white)



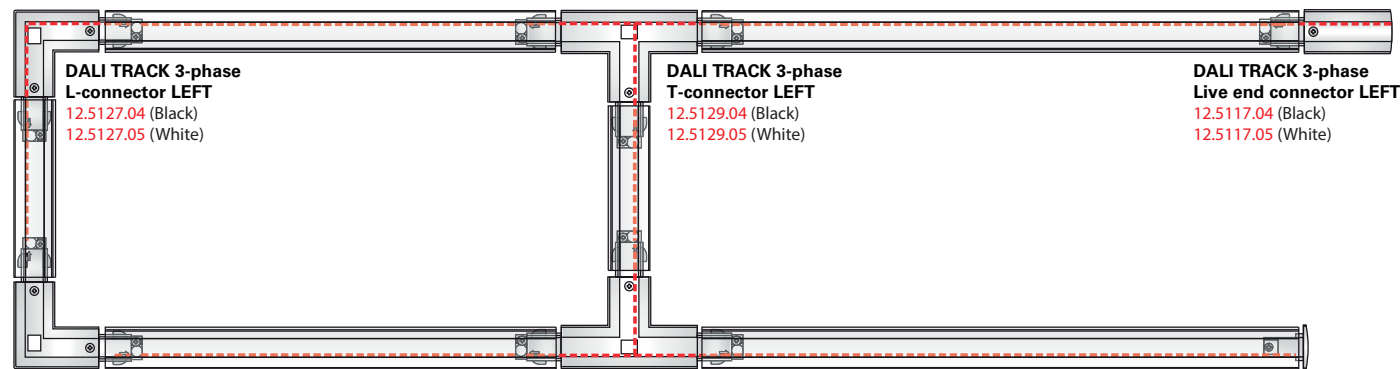
### MAR-TRACK 3-PHASE:

12.5111.colour 1 meter (04= black / 05= white)  
 12.5113.colour 2 meters (04= black / 05= white)  
 12.5115.colour 3 meters (04= black / 05= white)



BLACK WHITE  
**04** **05**

### TRACK SYSTEM ACCESSORIES ARE ORDERED SEPARATELY



**DALI TRACK 3-phase L-connector LEFT**  
 12.5127.04 (Black)  
 12.5127.05 (White)

**DALI TRACK 3-phase T-connector RIGHT**  
 12.5131.04 (Black)  
 12.5131.05 (White)

**DALI TRACK 3-phase Live end connector LEFT**  
 12.5117.04 (Black)  
 12.5117.05 (White)

"No rights can be derived from the information provided on this Instruction Manual. Information on the Instruction Manual has been compiled with the utmost care and is updated on a continuous basis. Nevertheless Maretti cannot guarantee that all information is free of errors, complete or fully up to date."

12.5111.COLOUR 1M  
 12.5113.COLOUR 2M  
 12.5115.COLOUR 3M

# DALI TRACK 3-PHASE SERIES

## INSTRUCTION

5/6

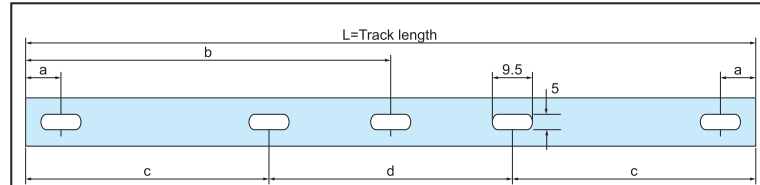
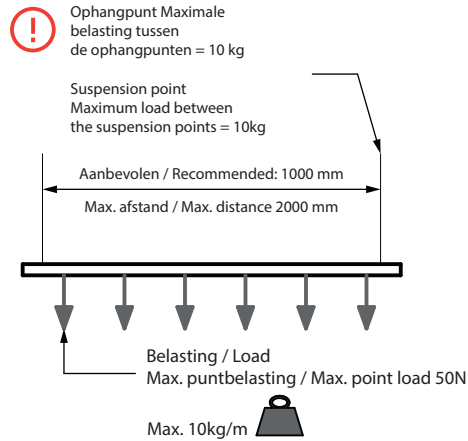


### BELANGRIJKE INFORMATIE:

- Zorgvuldig lezen voor de installatie van het railsysteem.
- System cijfer: 400V/16A 3-phase (11KW) of 1-phase 3 circuit 230V/16A (3x3.7 KW).
- ALLEEN VOOR BINNEN GEBRUIK en in droge en stofvrije ruimten. Het systeem heeft IP20.
- Het systeem NIET elektrisch of fysiek overbelasten.
- Gebruik alleen producten die bestemd zijn voor gebruik met dit product of compatibel.
- Forceer de adapter nooit in een positie of verbinding. Overmatige kracht is normaal gesproken een aanwijzing voor andere problemen.
- Alle elektrische aansluitingen die het railsysteem voeden, moeten worden uitgevoerd als vaste installatie.
- Alle afmetingen in mm indien niet vermeld.
- Mag alleen worden geïnstalleerd door een erkend installateur.
- NOOIT voeding van de baan op meer dan één aansluitpunt!

### IMPORTANT INFORMATION:

- Read carefully before install the track system.
- System rating: 400V/16A 3-phase (11KW) or 1-phase 3 circuit 230V/16A (3x3.7 KW).
- FOR INDOOR USE ONLY and in dry and dust free spaces. System is rated IP20.
- Do NOT electrically or physically overload system.
- Use only products intended for operation with this product or compatible.
- Never force the adaptor into a position or connection. Excessive force is normally an indication of other problems.
- All electrical connections power feeding the track must be carried out as fixed installation.
- All dimensions in mm if not stated.
- Shall only be installed by authorized installer.
- NEVER power supply the track at more than one connection point!



L / mm	a / mm	b / mm	c / mm	d / mm
1000	125			
2000	125	998		
3000	125		914	1167
4000	125		1247	1501

Niet geleverd door Maretti  
 Not supplied by Maretti

Gebruik boorschroeven voor metalen beugels en metalen / houten schroeven voor zachtere materialen. Bepaal de grootte van de schroef om de lading te ondersteunen. Gebruik schroeven in alle gestante sleuven en draai ze stevig vast. Maximale schroefkop Ø8mm

Use drilling screws for metal brackets and metal/wooden screws for softer materials. Dimension the size of the screw to support the load. Use screws in all punched slots and tighten them firmly. Maximum screw head Ø8mm

De sleutelcode in de feeder moet overeenkomen  
 The key code in the feeder must be a match

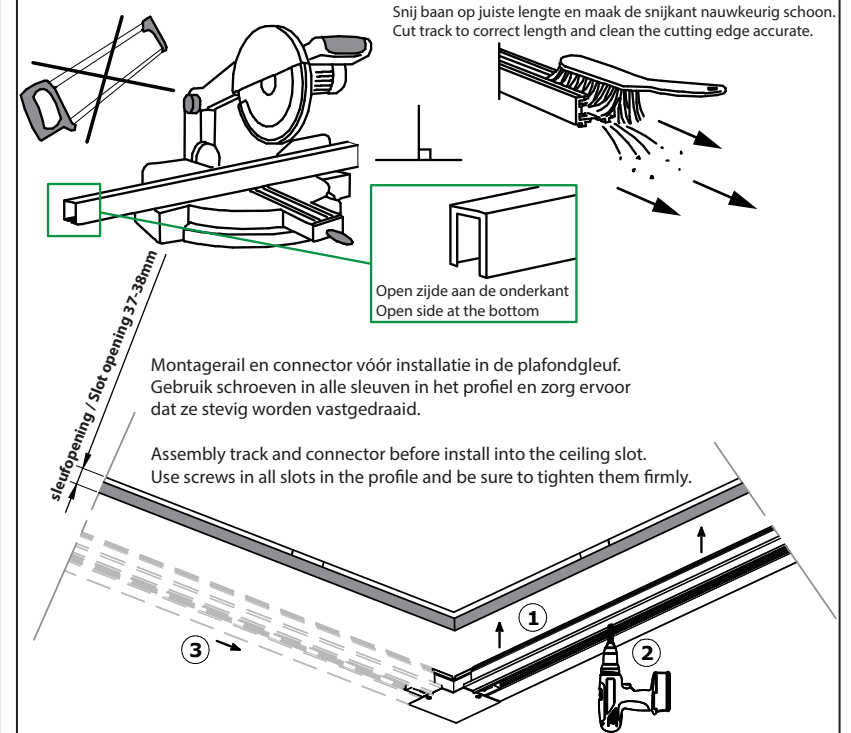
Leid de kabel door de kabelinvoer.  
 Let op: deze installatie moet voldoen met de vereisten voor vaste installatie.

Route the cable through the cable entry.  
 Remember: This installation must comply with the requirements for fixed installation.

Nadat u de connector op de rail hebt bevestigd, draait u de schroef stevig vast.

After join the connector to the track, tighten the screw firmly.

Optioneel toegangspunt  
 Optional entry



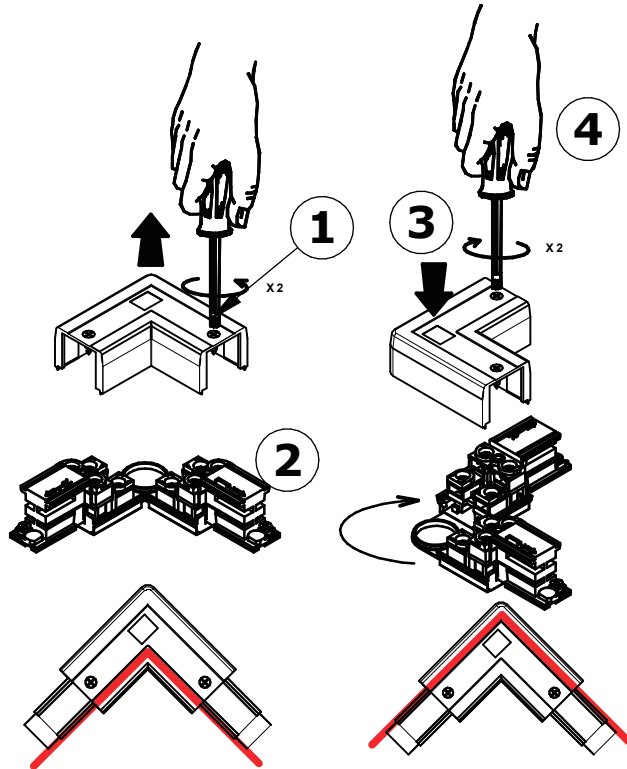
"No rights can be derived from the information provided on this Instruction Manual. Information on the Instruction Manual has been compiled with the utmost care and is updated on a continuous basis. Nevertheless Maretti cannot guarantee that all information is free of errors, complete or fully up to date."

12.5111.COLOUR 1M  
 12.5113.COLOUR 2M  
 12.5115.COLOUR 3M

# DALI TRACK 3-PHASE SERIES

## INSTRUCTION

6/6



Omkeerbare L- en T-connector is mogelijk omdraaien om overeen te komen met de richting van het profiel.

Om dit te doen:

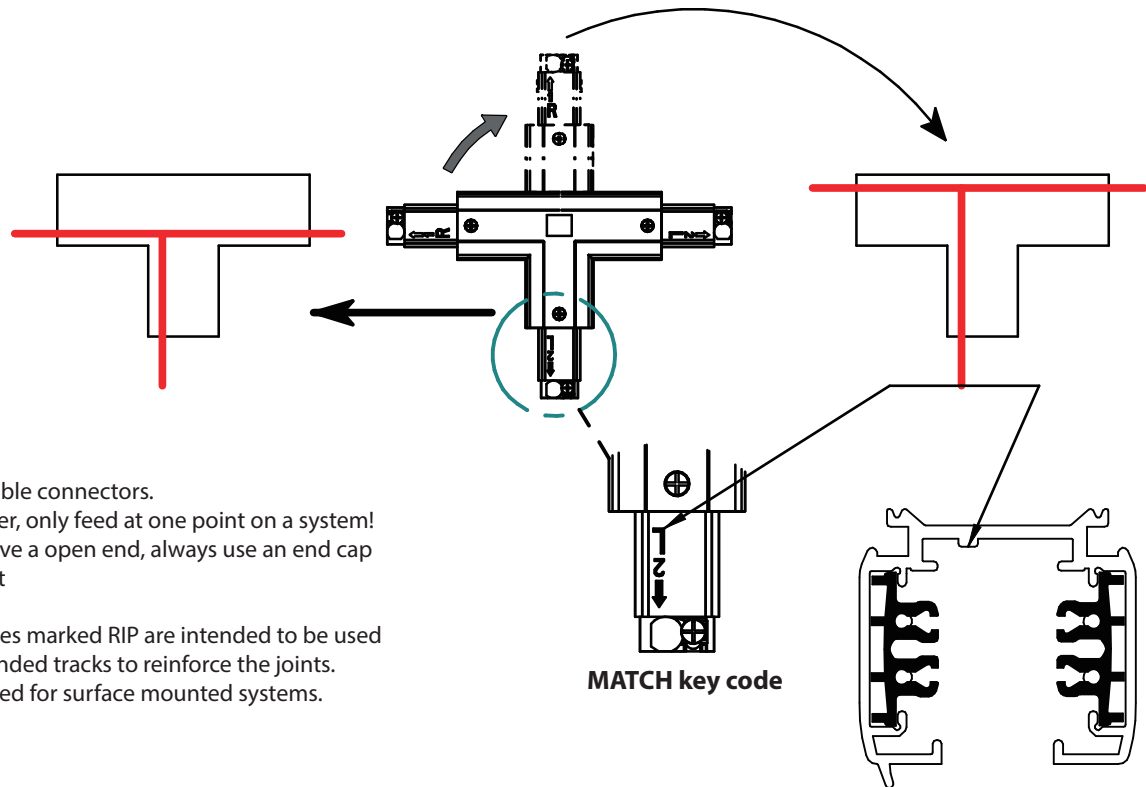
1. Draai de schroeven los die de kap vasthouden en verwijder de kap.
2. Draai de L-connector 180 of de T-connector 90.
3. Plaats het deksel terug en draai de schroeven vast.

Reversible L and T connector is possible to turn around to match profile direction.

To do so:

1. Unscrew the screws holding the cover and remove the cover.
2. Turn the L connector 180 or the T connector 90.
3. Put back the cover and tighten the screws.

Zorg ervoor dat u de profielrichting op alle verbindingpunten afstemt. Be sure to match the profile direction on all connection points.



\* = Voedbare connectoren.  
 Denk eraan, voer maar op één punt op een systeem!  
 Laat nooit een open uiteinde achter, gebruik altijd een end cap om het te bedekken

Accessoires gemarkeerd met RIP zijn bedoeld om te worden gebruikt op hangende rails om de gewrichten te versterken.  
 Niet nodig voor op het oppervlak gemonteerde systemen.

\* = Feedable connectors.  
 Remember, only feed at one point on a system!  
 Never leave a open end, always use an end cap to cover it

Accessories marked RIP are intended to be used on suspended tracks to reinforce the joints.  
 Not needed for surface mounted systems.

"No rights can be derived from the information provided on this Instruction Manual. Information on the Instruction Manual has been compiled with the utmost care and is updated on a continuous basis. Nevertheless Maretti cannot guarantee that all information is free of errors, complete or fully up to date."