



# MARETTI LIGHTING



Maretti Lighting  
Bolderweg 7

1332 AX Almere  
the Netherlands

T +31 (0) 36 532 66 12

E info@maretti.com  
W www.maretti.com

Maretti Lighting is well-known in the World of interior design. In businesses, homes, store chains, and hospitality facilities all over the world, Maretti is unmistakable present with its project lighting that does more than just provide light. We make lighting an essential part of the interior. Maretti stands for stylish top quality and trendsetting design, modern, timeless and most of all, original.

Maretti Lighting works with all the top brands in the lighting industry, but we are especially notable for our own large product line and introduce our own brand name "Maretti". Our production team distinguishes itself time and time again with unique innovations from our own atelier and therefore our projects exude an entirely unique identity.

© Copyright Maretti Projectverlichting.

Our IM was made with the greatest of care. Nevertheless, the colours displayed in the IM may differ slightly from the real colours because of the printing process. Colour, size and range are subject to change. Nothing from this IM may be copied, reproduced and/or published by print, photocopy or in any other way without Maretti Lighting's written permission. All product and design copyrights belong to Maretti Lighting.

#### GUARANTEE TERMS AND CONDITIONS

The other party should inspect the delivered items immediately upon receipt with regard to its soundness. Entitlements to repair or replacement only exist if the other party

- In the case of visible defects, informs MPV of them immediately.

- In the case of defects that are not visible, informs MPV in writing of the defects, within 2 working days after the day the defects were found, or in all reason could have been found and furthermore demonstrates that the MPV instructions for use, maintenance and operation were followed, whilst the defects are not the consequence of normal wear and tear, misuse, negligence, accident, exceeding the limits prescribed by the MPV or by the legal safety regulations, or, in the case of a repair or change without MPV's consent or the consent of its recognised repairer, there will be no entitlement to repairs or replacement. The parts that have to be replaced must be made available free of charge to MPV. Noncompliance by the other party to one or more of its obligations will release MPV of all its guarantee obligations. In the case of assembly of the other party's own products by Maretti, MPV will release itself from all guarantee stipulations.

Moreover, our general delivery terms and conditions are applicable. These can be obtained from Maretti or can be downloaded from [www.maretti.com](http://www.maretti.com)

The installation must be done by a competent installer. Maretti recommends that your (outside) lighting and fixtures are inspected and maintained annually.

D: Für Garantiebedingungen bitte lesen Sie unsere Webseite [www.maretti.com](http://www.maretti.com)  
E: Consulte nuestro sitio web para los condiciones de garantía [www.maretti.com](http://www.maretti.com)  
FR: Consultez notre site web pour les conditions de garantie [www.maretti.com](http://www.maretti.com)  
NL: Voor garantievoorwaarden zie onze website [www.maretti.com](http://www.maretti.com)

- 11.1825.COLOUR 1L
- 11.1826.COLOUR 2L
- 11.1827.COLOUR 3L
- 11.1828.COLOUR 4L

## PORTOFINO 70 SERIES

1/5



11.1825



11.1826



11.1827



11.1828



50W	MAX. WATTAGE		INDOOR		ADJUSTABLE INSTALLATION KIT NOT INCLUDED
B15D	SOCKET MAX. 50V AC/DC		2-PINS PLUG & PLAY		CE MARK
	BULB NOT INCLUDED		CABLE 300mm		
	DRIVER NOT INCLUDED		LIGHT TWISTING		

11.1825.COLOUR 1L  
 11.1826.COLOUR 2L  
 11.1827.COLOUR 3L  
 11.1828.COLOUR 4L

# PORTOFINO 70 SERIES

2/5

## VERSTELBARE MONTAGEKIT: APART VERKRIJGBAAR / ADJUSTABLE INSTALLATION KIT: SEPARATE ORDER

ART. NR.	NAAM / NAME	TE GEBRUIKEN VOOR / TO USE FOR	KLEUR / COLOUR
11.1836.05.A	VERSTELBARE MONTAGEKIT / ADJUSTABLE INSTALLATION KIT	1 LIGHT	WIT / WHITE
11.1837.05	VERSTELBARE MONTAGEKIT / ADJUSTABLE INSTALLATION KIT	2 LIGHT	WIT / WHITE
11.1838.05	VERSTELBARE MONTAGEKIT / ADJUSTABLE INSTALLATION KIT	3 LIGHT	WIT / WHITE
11.1839.05	VERSTELBARE MONTAGEKIT / ADJUSTABLE INSTALLATION KIT	4 LIGHT	WIT / WHITE

## LICHTBRON: APART VERKRIJGBAAR / LIGHT BULB: SEPARATE ORDER

ART. NR.	NAAM / NAME	SOCKET	VOLTAGE	WATTAGE	MILIAMPER	KELVIN	LUMEN	CRI	BUNDELHOEK / BEAM ANGLE
21.8220.82	CUSCO 70 LED AR70	B15D	36V DC	5,8W	160mA	2700K	300 lm	Ra97	24°
21.8223.82.A	CUSCO 70 LED AR70	B15D	36V DC	5,8W	160mA	CTA 2000-2700K	300 lm	Ra97	24°

## DRIVERS: APART VERKRIJGBAAR / SEPARATE ORDER

ART. NR.	NAAM / NAME	WATTAGE	MILIAMPER	DIMMEN / DIMMING	AANSLUITING / CONNECTION	AANTAL LICHTBRONNEN / NUMBER OF LIGHT BULBS
16.8100.0160.E*	DRIVER P&P	4,8 – 6,7W	160mA	Fase aan- afsnijding / Tronic (L/C)	2m kabel eurostekker	1
16.8100.0160.G*	DRIVER P&P	4,8 – 6,7W	160mA	Fase aan- afsnijding / Tronic (L/C)	2m kabel GST18	1
16.8100.0160.W*	DRIVER P&P	4,8 – 6,7W	160mA	Fase aan- afsnijding / Tronic (L/C)	2m kabel WINSTA	1
16.7000.0160.Z*	DRIVER DALI INTEL P&P	0,4W – 7,2W	160mA	CTA/AM dimbaar	2m kabel excl. prim. connector	1
16.7000.0160.G*	DRIVER DALI INTEL P&P	0,4W – 7,2W	160mA	CTA/AM dimbaar	2m kabel GST18 connector	1
16.7000.0160.W*	DRIVER DALI INTEL P&P	0,4W – 7,2W	160mA	CTA/AM dimbaar	2m kabel WINSTA connector	1
16.7105.0160.G*	DRIVER DALI DUO P&P	2x 8,8W	160mA	CTA/AM dimbaar	GST18 5-polig / 1 DALI adres 2x uitgang	2
16.7105.0160.W*	DRIVER DALI DUO P&P	2x 8,8W	160mA	CTA/AM dimbaar	WINSTA 5-polig / 1 DALI adres 2x uitgang	2
16.7105.0160.Z*	DRIVER DALI DUO P&P	2x 8,8W	160mA	CTA/AM dimbaar	excl. prim. connector / 1 DALI adres 2x uitgang	2

\*  
**E:** Europlug  
**G:** GST18  
**W:** Winsta  
**Z:** Geen plug

## PLUG & PLAY CABLES (VOOR LED!, NIET VOOR HALOGEEN): APART VERKRIJGBAAR / SEPARATE ORDER

ART. NR.	NAAM / NAME	AFMETINGEN / DIMENSIONS
70.7125.05	LED KOPPELKABEL / LED COUPLING CABLE	L: 50cm 2x0,5mm <sup>2</sup>
70.7127.05	LED KOPPELKABEL / LED COUPLING CABLE	L:100cm 2x0,5mm <sup>2</sup>
70.7130.05	LED KOPPELKABEL / LED COUPLING CABLE	L:150cm 2x0,5mm <sup>2</sup>
70.7135.05	LED KOPPELKABEL / LED COUPLING CABLE	L:250cm 2x0,5mm <sup>2</sup>



LET OP: Volg en bewaar deze gebruiksaanwijzing.

- Zorg ervoor dat de netspanning uitgeschakeld is voor installatie, reparatie of onderhoud. (Installatie, reparatie en onderhoud uitsluitend door gekwalificeerde personen).
- Voor reparatie of onderhoud uitsluitend originele delen gebruiken. Probeer het product niet zelf te demonteren en te repareren, onjuiste reparaties kunnen het product beschadigen en elektrische schokken veroorzaken wat tot ernstig letsel kan leiden.
- Gebruik het armatuur alleen binnenshuis.
- Het armatuur niet in vochtige of natte ruimtes gebruiken.
- Uitsluitend op het etiket aangegeven lichtbronnen gebruiken.

Wanneer u een spot inbouwt moet u rekening houden met de warmte en dus rekening houden met extra inbouwruimte rond je armatuur om eventuele schade te voorkomen.

De fabrikant aanvaardt geen enkele aansprakelijkheid voor letsel of schade als gevolg van een verkeerde toepassing van het armatuur.  
 De fabrikant aanvaardt geen aansprakelijkheid voor schade van de lampen volgens de richtlijnen van de fabrikant.  
 Als er schade aan elektrische onderdelen te vinden zijn, vraag dan een electricien om het te vervangen.

### Onderhoud is behoud:

- Een goede instandhouding van het armatuur is sterk afhankelijk van omgevings- en onderhoudsfactoren. Hierop kunnen wij geen invloed uitoefenen.
- Schakel voor de zekerheid de elektriciteit uit!
- Gebruik geen agressieve, schurende of chemische schoonmaakmiddelen.

NOTE: Follow and keep this instructions manual.

- Make sure that the mains voltage is switched off before installation, repair or maintenance. (Installation, repair and maintenance only by qualified persons).
- Use only original parts for repairs or maintenance. Never attempt to disassemble, repair or alter the product in any way, improper repairs could damage the product causing electrical shocks which may cause serious injury.
- Use the fixture only indoors.
- Don't use the fixture in humid or wet areas.
- Use only suitable light sources indicated on the label.

Make sure you have at least as much space in your (false) ceiling. It is very important to give enough air cooling to avoid any damage.

The manufacturer accepts no liability for any injuries or damages resulting from the incorrect use or installation of the fixture.  
 Any operation performed on the fixture that is not in accordance with instructions will void manufacturer's warranty.  
 If you find any damage to the electrical parts, please ask a qualified electrician to replace it.

### Maintenance is preservation:

- A good preservation of the fixture is highly dependent on environmental factors and maintenance. We cannot exercise any influence on this.
- Make sure that the mains voltage is switched off before you begin.
- Do not use strong, chemicals or abrasive cleaners.

"No rights can be derived from the information provided on this Instruction Manual. Information on the Instruction Manual has been compiled with the utmost care and is updated on a continuous basis. Nevertheless Maretti cannot guarantee that all information is free of errors, complete or fully up to date."


- 11.1825.COLOUR 1L
- 11.1826.COLOUR 2L
- 11.1827.COLOUR 3L
- 11.1828.COLOUR 4L

# PORTOFINO 70 SERIES

3/5

## MOUNTING INSTRUCTIONS IN LOWERED CEILING

### VOORDAT U BEGINT / BEFORE YOU BEGIN



Schakel altijd eerst de stroom uitvoordat u installatie-, onderhoud of reparatiewerkzaamheden uitvoert.

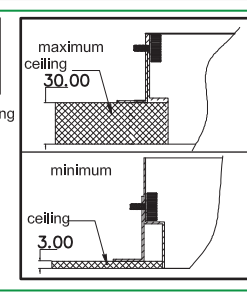
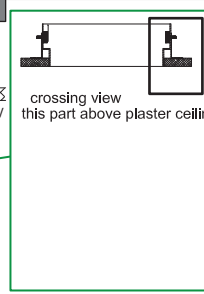
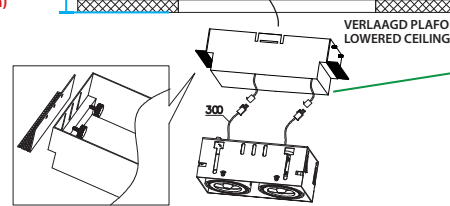
Always switch off the mains voltage before carrying out installation, maintenance and repair work.

**Opmerking:**  
De verstelbare montagekit is noodzakelijk om het armatuur te monteren (het is apart te bestellen)

**Note:**  
The adjustable installation kit is necessary to mount the fixture (to order separately)

#### PLAFOND / CEILING

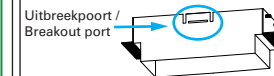
MINIMALE RUIMTE 90mm  
Verlaagd plafond meegerekend  
MINIMAL SPACE 90mm  
Lowered ceiling included



### UITBREEKPOORT / BREAKOUT PORT

Voor de verstelbare montagekit met een uitbreekpoort: Als de ruimte tussen de beton plafond tot aan de onderkant van het verlaagd plafond minder dan 110mm, het is mogelijk om deze af te breken zodat je de driver door kunt schuiven. LET OP: u moet wel zorgen dat er genoeg ruimte is voor de driver, boven het verlaagd plafond (150mm horizontaal).

For the adjustable mounting kit with a breakout port: If the space between the concrete ceiling to the bottom of the suspended ceiling less than 110mm, it is possible to break this port so that you can slide the driver in. NOTE: you must ensure that there is enough space for the driver, above the suspended ceiling (150 mm horizontal).



**Bij beperkte ruimte, de uitbreekpoort voor montage afbreken. With limited space, break off the breakout port for installation**

**1** UITBREEKPOORT / BREAKOUT PORT

U kunt met dit uitleg beginnen als u de poort moet breken zo niet ga naar afbeelding 2.

You can start with this explanation if you have to break the port if no go to figure 2.

**2**

Lijm kit  
Adhesive sealant

**3**

150mm  
DRIVER

**4**

Stucwerk / Plasterwork

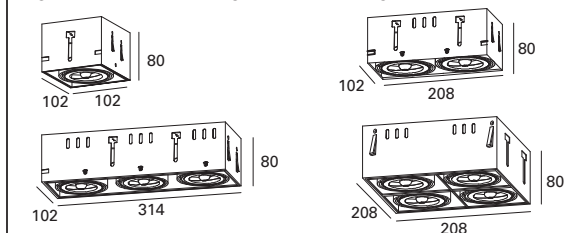
**5**

300

### AFMETINGEN EN ZAAGMATEN / DIMENSIONS AND CUTTING SIZES

#### AFMETINGEN ARMATUREN / DIMENSIONS FIXTURES

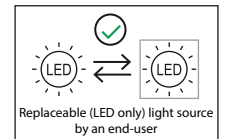
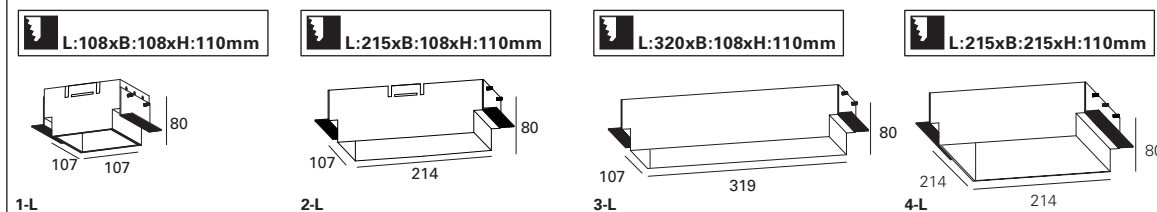
Hoogte armatuur met trekontsting is 88mm / Fixture height with strain relief is 88mm



#### AFMETINGEN KIT / DIMENSIONS KIT

Zaagmaten met verstelbare montagekit / Cutting sizes with adjustable installation kit

Opmerking: Deze kit is nodig om het product te kunnen installeren. Note: This kit is needed to install the product. (kit niet inbegrepen / kit not included)



#### LET OP:

- Volg en bewaar deze gebruiksaanwijzing.
- Zorg ervoor dat de netspanning uitgeschakeld is voor installatie, reparatie of onderhoud. (Installatie, reparatie en onderhoud uitsluitend door gekwalificeerde personen).
- Voor reparatie of onderhoud uitsluitend originele delen gebruiken.
- Gebruik het armatuur alleen binnenshuis. Het armatuur niet in vochtige of natte ruimte gebruiken.
- Uitsluitend op het etiket aangegeven lichtbronnen gebruiken.

Wanneer u een spot inbouwt moet u rekening houden met de warmte en dus rekening houden met extra inbouwruimte rond je armatuur om eventuele schade te voorkomen. De fabrikant aanvaardt geen enkele aansprakelijkheid voor letsel of schade als gevolg van een verkeerde toepassing van het armatuur. De fabrikant aanvaardt geen garantie in geval van het niet behandelen van de lampen volgens de richtlijnen van de fabrikant. Als er schade aan elektrische onderdelen te vinden zijn, vraag dan een elektricien om het te vervangen.

#### Onderhoud is behoud:

- Een goede instandhouding van het armatuur is sterk afhankelijk van omgevings- en onderhoudsfactoren. Hierop kunnen wij geen invloed uitoefenen.
- Schakel voor de zekerheid de elektriciteit uit!
- Gebruik geen bijtende, chemische middelen of schurende schoonmaakmiddelen. Gebruik geen bijtende, chemische of schurende schoonmaakmiddelen.

#### NOTE:

- Follow and keep this instructions manual.
- Make sure that the mains voltage is switched off for installation, repair or maintenance. (Installation, repair and maintenance only by qualified persons).
- Use only original parts for repairs or maintenance.
- Use the fixture only indoors. Don't use the fixture in humid or wet areas.
- Use only suitable light sources indicated on the label.

Make sure you have at least as much space in your (false) ceiling. It is very important to give enough air cooling to avoid any damage.

The manufacturer accepts no liability for any injuries or damages resulting from the incorrect use or installation of the fixture. Any operation performed on the fixture that is not in accordance with instructions will void manufacturer's warranty. If you find any damage to the electrical parts, please ask a qualified electrician to replace it.

#### Maintenance is preservation:

- A good preservation of the fixture is highly dependent on environmental factors and maintenance. We cannot exercise any influence on this.
- Make sure that the mains voltage is switched off before you begin.
- Do not use strong, chemicals or abrasive cleaners.

"No rights can be derived from the information provided on this Instruction Manual. Information on the Instruction Manual has been compiled with the utmost care and is updated on a continuous basis. Nevertheless Maretti cannot guarantee that all information is free of errors, complete or fully up to date."

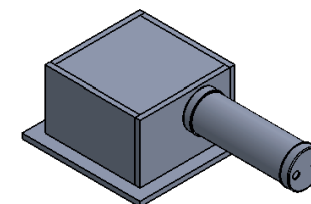
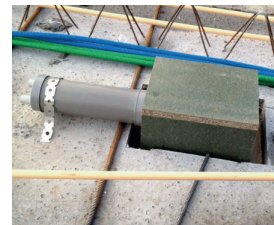
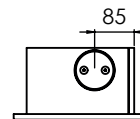
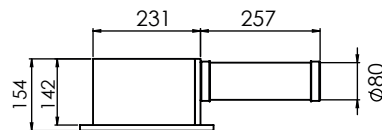
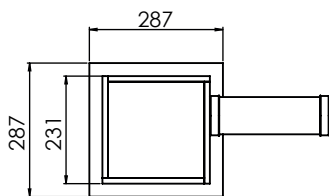
- 11.1825.COLOUR 1L
- 11.1826.COLOUR 2L
- 11.1827.COLOUR 3L
- 11.1828.COLOUR 4L

# PORTOFINO 70 SERIES

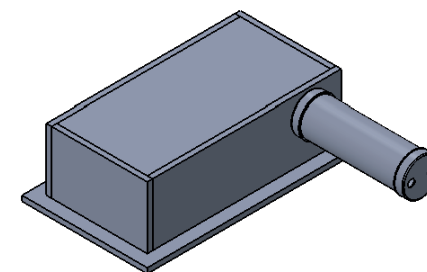
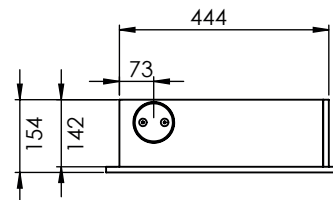
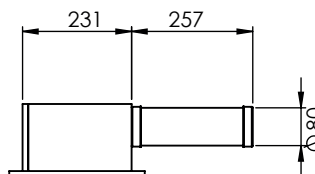
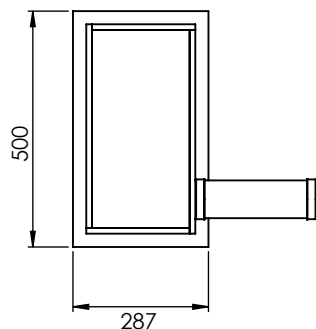
4/5

MEASUREMENTS: CONCRETE BOXES (note: The boxes can't be ordered separately; as they are produced on order basis, price on request). See next page for more about concrete ceiling.

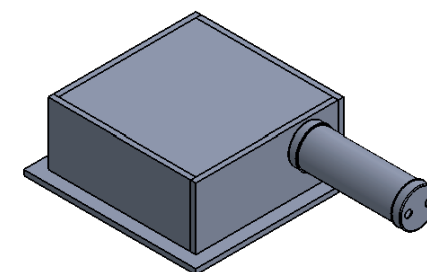
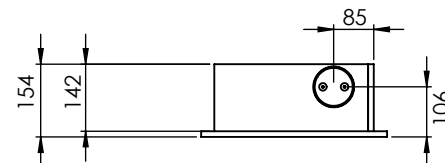
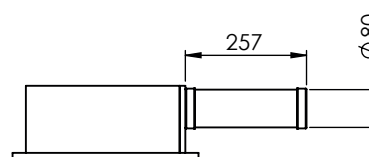
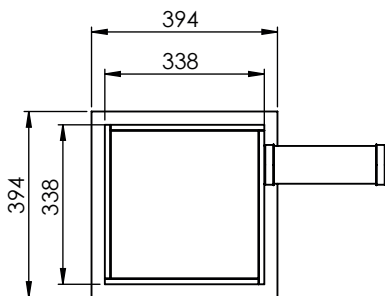
## Measurements for the PORTOFINO 70 1 LIGHT



## Measurements for the PORTOFINO 70 2 & 3 LIGHTS



## Measurements for the PORTOFINO 70 4 LIGHTS



**LET OP:**  
Lees A.U.B. aandachtig de veiligheidsvoorschriften op pagina 3

**NOTE:**  
Please read carefully the safety warnings in page 3

"No rights can be derived from the information provided on this Instruction Manual. Information on the Instruction Manual has been compiled with the utmost care and is updated on a continuous basis. Nevertheless Maretti cannot guarantee that all information is free of errors, complete or fully up to date."

11.1825.COLOUR 1L  
 11.1826.COLOUR 2L  
 11.1827.COLOUR 3L  
 11.1828.COLOUR 4L

# PORTOFINO 70 SERIES

5/5

## MOUNTING INSTRUCTIONS IN CONCRETE CEILING

**1**

**2**

Use the concrete stamp to support the box. You can remove the concrete stamp when the concrete is completely dried out

Concrete stamp

**3**

Remove the construction

**4**

**5**

**6**

Put the driver into the PVC tube.

Hight depends on the hight of the stucco

**7**

PLASTER



LET OP:  
 Lees A.U.B. aandachtig de veiligheidsvoorschriften op pagina 3

NOTE:  
 Please read carefully the safety warnings in page 3

"No rights can be derived from the information provided on this Instruction Manual. Information on the Instruction Manual has been compiled with the utmost care and is updated on a continuous basis. Nevertheless Maretti cannot guarantee that all information is free of errors, complete or fully up to date."