



Maretti Lighting  
Bolderweg 7

1332 AX Almere  
the Netherlands

T +31 (0) 36 532 66 12  
F +31 (0) 36 532 17 35

E info@maretti.com  
W www.maretti.com

Maretti Lighting is well-known in the World of interior design. In businesses, homes, store chains, and hospitality facilities all over the world, Maretti is unmistakable present with its project lighting that does more than just provide light. We make lighting an essential part of the interior. Maretti stands for stylish top quality and trendsetting design, modern, timeless and most of all, original.

Maretti Lighting works with all the top brands in the lighting industry, but we are especially notable for our own large product line and introduce our own brand name "Maretti". Our production team distinguishes itself time and time again with unique innovations from our own atelier and therefore our projects exude an entirely unique identity.

© Copyright Maretti Projectverlichting.

Our IM was made with the greatest of care. Nevertheless, the colours displayed in the IM may differ slightly from the real colours because of the printing process. Colour, size and range are subject to change. Nothing from this IM may be copied, reproduced and/or published by print, photocopy or in any other way without Maretti Lighting's written permission. All product and design copyrights belong to Maretti Lighting.

#### GUARANTEE TERMS AND CONDITIONS

The other party should inspect the delivered items immediately upon receipt with regard to its soundness. Entitlements to repair or replacement only exist if the other party

- In the case of visible defects, informs MPV of them immediately.

- In the case of defects that are not visible, informs MPV in writing of the defects, within 2 working days after the day the defects were found, or in all reason could have been found and furthermore demonstrates that the MPV instructions for use, maintenance and operation were followed, whilst the defects are not the consequence of normal wear and tear, misuse, negligence, accident, exceeding the limits prescribed by the MPV or by the legal safety regulations, or, in the case of a repair or change without MPV's consent or the consent of its recognised repairer, there will be no entitlement to repairs or replacement. The parts that have to be replaced must be made available free of charge to MPV. Noncompliance by the other party to one or more of its obligations will release MPV of all its guarantee obligations. In the case of assembly of the other party's own products by Maretti, MPV will release itself from all guarantee stipulations. Moreover, our general delivery terms and conditions are applicable. These can be obtained from Maretti or can be downloaded from [www.maretti.com](http://www.maretti.com)

The installation must be done by a competent installer. Maretti recommends that your (outside) lighting and fixtures are inspected and maintained annually.

D: Für Garantiebedingungen bitte lesen Sie unsere Webseite [www.maretti.com](http://www.maretti.com)  
E: Consulte nuestro sitio web para los condiciones de garantía [www.maretti.com](http://www.maretti.com)  
FR: Consultez notre site web pour les conditions de garantie [www.maretti.com](http://www.maretti.com)  
NL: Voor garantievoorwaarden zie onze website [www.maretti.com](http://www.maretti.com)

11.1811.COLOUR.A  
11.1812.COLOUR.A  
11.1813.COLOUR.A  
11.1814.COLOUR.A

## PORTOFINO AR111

With adjustable installation kit

1/5



11.1811



11.1812



11.1813



11.1814

BLACK WHITE

04

05

12V	VOLTAGE	20	IP RATING		GEAR NOT INCLUDED		
50W	WATTAGE MAX.		INDOOR		ADJUSTABLE INSTALLATION KIT		
	BULB NOT INCLUDED		12V, 2-PINS PLUG & PLAY		TWISTING		
G53	SOCKET		CABLE 300MM		CE MARK		

11.1811.COLOUR.A  
 11.1812.COLOUR.A  
 11.1813.COLOUR.A  
 11.1814.COLOUR.A

# PORTOFINO AR111

with adjustable installation kit  
 2/5

## BULBS

### BULBS

**21.8070.82.E** PALOMA LED AR111 | 15W | 350mA | 24° | 780lm |  
 CTA 2000-3000K | Ra88

## DRIVER

### DRIVER

**16.8101.0350.E** LED DRIVER FOR PALOMA 350mA

## INSTALLATION KIT

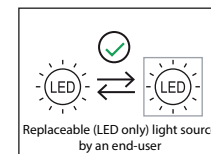
- 11.1807** ADJ. KIT 1 LIGHT (BLACK, WHITE)
- 11.1808** ADJ. KIT 2 LIGHTS (BLACK, WHITE)
- 11.1809** ADJ. KIT 3 LIGHTS (BLACK, WHITE)
- 11.1810** ADJ. KIT 4 LIGHTS (BLACK, WHITE)

ACCESSORIES  
SEPARATE ORDER

### DRIVERS ZIJN APART VERKRIJGBAAR / SEPARATE ORDER

ARTI. NR.	NAAM	WATTAGE	MILIAMPER	TYPE DIMMING	AANSLUITING	AANTAL LICHTBRONNEN/
16.8101.0350.E	DRIVER P&P	10,5W – 14,7W	350mA	Fase af/triac dimbaar	2m kabel eurostekker	1
16.8101.0350.G	DRIVER P&P	10,5W – 14,7W	350mA	Fase af/triac dimbaar	2m kabel GST18 P3	1
16.8101.0350.W	DRIVER P&P	10,5W – 14,7W	350mA	Fase af/triac dimbaar	2m kabel WINSTA P3	1
16.7001.0350.G	DRIVER DALI INTEL P&P	4W – 18W	350mA	DALI CTA/AM dimbaar	2m GST18 kabel 5P	1
16.7001.0350.W	DRIVER DALI INTEL P&P	4W – 18W	350mA	DALI CTA/AM dimbaar	2m WINSTA kabel 5P	1
16.7001.0350.Z	DRIVER DALI INTEL P&P	4W – 18W	350mA	DALI CTA/AM dimbaar	excl. prim. connector kabel 5P	1
16.7103.0350.G	DRIVER DALI MULTI MAXI P&P	4W – 39W	350mA	DALI CTA/AM dimbaar	2m GST18 kabel 5P	1 – 2
16.7103.0350.W	DRIVER DALI MULTI MAXI P&P	4W – 39W	350mA	DALI CTA/AM dimbaar	2m WINSTA kabel 5P	1 – 2
16.7103.0350.Z	DRIVER DALI MULTI MAXI P&P	4W – 39W	350mA	DALI CTA/AM dimbaar	excl. prim. connector kabel 5P	1 – 2
16.7906.0350.E	DRIVER 1-10V TOP P&P	3,5W – 18,9W	350mA	1-10V CTA/AM dimbaar	2m eurostekker kabel	1
16.7906.0350.G	DRIVER 1-10V TOP P&P	3,5W – 18,9W	350mA	1-10V CTA/AM dimbaar	2m GST18 kabel	1
16.7906.0350.W	DRIVER 1-10V TOP P&P	3,5W – 18,9W	350mA	1-10V CTA/AM dimbaar	2m WINSTA kabel	1
16.7903.0350.E	DRIVER 1-10V MULTI MAXI P&P	7W – 39,2W	350mA	1-10V CTA/AM dimbaar	2m eurostekker kabel	1 – 2
16.7903.0350.G	DRIVER 1-10V MULTI MAXI P&P	7W – 39,2W	350mA	1-10V CTA/AM dimbaar	2m GST18 kabel 3P	1 – 2
16.7903.0350.W	DRIVER 1-10V MULTI MAXI P&P	7W – 39,2W	350mA	1-10V CTA/AM dimbaar	2m WINSTA kabel 3P	1 – 2

**E:** Europlug  
**G:** GST18  
**W:** Winsta  
**Z:** Geen plug



#### LET OP: Volg en bewaar deze gebruiksaanwijzing.

- Zorg ervoor dat de netspanning uitgeschakeld is voor installatie, reparatie of onderhoud. (Installatie, reparatie en onderhoud uitsluitend door gekwalificeerde personen).
- Voor reparatie of onderhoud uitsluitend originele delen gebruiken. Probeer het product niet zelf te demonteren en te repareren, onjuiste reparaties kunnen het product beschadigen en elektrische schokken veroorzaken wat tot ernstig letsel kan leiden.
- Gebruik het armatuur alleen binnenshuis.
- Het armatuur niet in vochtige of natte ruimte gebruiken.
- Uitsluitend op het etiket aangegeven lichtbronnen gebruiken.

De fabrikant aanvaardt geen enkele aansprakelijkheid voor letsel of schade als gevolg van een verkeerde toepassing van het armatuur. De fabrikant aanvaardt geen garantie in geval van het niet behandelen van de lampen volgens de richtlijnen van de fabrikant. Als er schade aan elektrische onderdelen te vinden zijn, vraag dan een electricien om het te vervangen.

#### Onderhoud is behoud:

- Een goede instandhouding van het armatuur is sterk afhankelijk van omgevings- en onderhoudsfactoren. Hierop kunnen wij geen invloed uitoefenen.
- Schakel voor de zekerheid de elektriciteit uit!
- Gebruik geen bijtende, chemische of schurende schoonmaakmiddelen.

#### NOTE: Follow and keep this instructions manual.

- Make sure that the mains voltage is switched off for installation, repair or maintenance. (Installation, repair and maintenance only by qualified persons).
- Use only original parts for repairs or maintenance. Never attempt to disassemble, repair or alter the product in any way, improper repairs could damage the product causing electrical shocks which may cause serious injury.
- Use the fixture only indoors.
- Don't use the fixture in humid or wet areas.
- Use only suitable light sources indicated on the label.

The manufacturer accepts no liability for any injuries or damages resulting from the incorrect use or installation of the fixture. Any operation performed on the fixture that is not in accordance with instructions will void manufacturer's warranty. If you find any damage to the electrical parts, please ask a qualified electrician to replace it.

#### Maintenance is preservation:

- A good preservation of the fixture is highly dependent on environmental factors and maintenance. We cannot exercise any influence on this.
- Make sure that the mains voltage is switched off before you begin.
- Do not use strong, chemicals or abrasive cleaners.

"No rights can be derived from the information provided on this Instruction Manual. Information on the Instruction Manual has been compiled with the utmost care and is updated on a continuous basis. Nevertheless Maretti cannot guarantee that all information is free of errors, complete or fully up to date."

11.1811.COLOUR.A  
 11.1812.COLOUR.A  
 11.1813.COLOUR.A  
 11.1814.COLOUR.A

# PORTOFINO AR111

with adjustable installation kit  
 3/5

## MOUNTING INSTRUCTIONS IN LOWERED CEILING



**LET OP:** Volg en bewaar deze gebruiksaanwijzing.  
 - Zorg ervoor dat de netspanning uitgeschakeld is voor installatie, reparatie of onderhoud. (Installatie, reparatie en onderhoud uitsluitend door gekwalificeerde personen).  
 - Voor reparatie of onderhoud uitsluitend originele delen gebruiken. Probeer het product niet zelf te demontieren en te repareren, onjuiste reparaties kunnen het product beschadigen en elektrische schokken veroorzaken wat tot ernstig letsel kan leiden.  
 - Gebruik het armatuur alleen binnenshuis.  
 - Het armatuur niet in vochtige of natte ruimte gebruiken.  
 - Uitsluitend op het etiket aangegeven lichtbronnen gebruiken.

De fabrikant aanvaardt geen enkele aansprakelijkheid voor letsel of schade als gevolg van een verkeerde toepassing van het armatuur. De fabrikant aanvaardt geen garantie in geval van het niet behandelen van de lampen volgens de richtlijnen van de fabrikant. Als er schade aan elektrische onderdelen te vinden zijn, vraag dan een elektricien om het te vervangen.

**Onderhoud is behoud:**

Een goede instandhouding van het armatuur is sterk afhankelijk van omgevings- en onderhoudsfactoren. Hierop kunnen wij geen invloed uitoefenen.  
 - Schakel voor de zekerheid de elektriciteit uit!  
 - Gebruik geen bijtende, chemische of schurende schoonmaakmiddelen.

**NOTE:** Follow and keep this instructions manual.  
 - Make sure that the mains voltage is switched off for installation, repair or maintenance. (Installation, repair and maintenance only by qualified persons).  
 - Use only original parts for repairs or maintenance. Never attempt to disassemble, repair or alter the product in any way, improper repairs could damage the product causing electrical shocks which may cause serious injury.  
 - Use the fixture only indoors.  
 - Don't use the fixture in humid or wet areas.  
 - Use only suitable light sources indicated on the label.

The manufacturer accepts no liability for any injuries or damages resulting from the incorrect use or installation of the fixture. Any operation performed on the fixture that is not in accordance with instructions will void manufacturer's warranty. If you find any damage to the electrical parts, please ask a qualified electrician to replace it.

**Maintenance is preservation:**

A good preservation of the fixture is highly dependent on environmental factors and maintenance. We cannot exercise any influence on this.  
 - Make sure that the mains voltage is switched off before you begin.  
 - Do not use strong, chemicals or abrasive cleaners.

"No rights can be derived from the information provided on this Instruction Manual. Information on the Instruction Manual has been compiled with the utmost care and is updated on a continuous basis. Nevertheless Maretti cannot guarantee that all information is free of errors, complete or fully up to date."

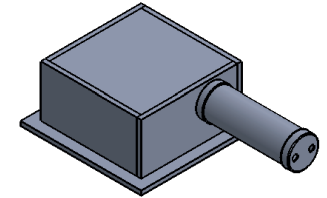
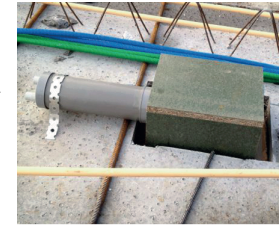
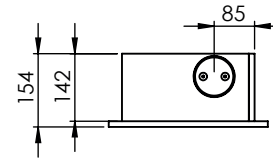
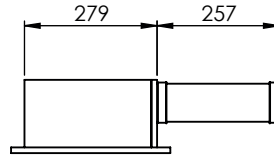
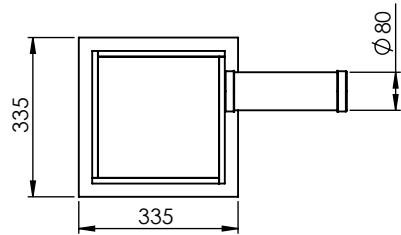
11.1811.COLOUR.A  
 11.1812.COLOUR.A  
 11.1813.COLOUR.A  
 11.1814.COLOUR.A

# PORTOFINO AR111

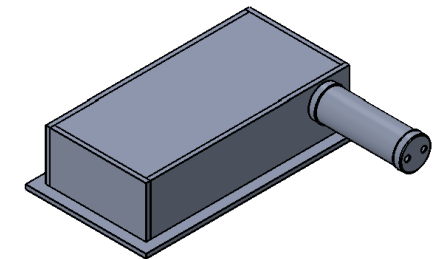
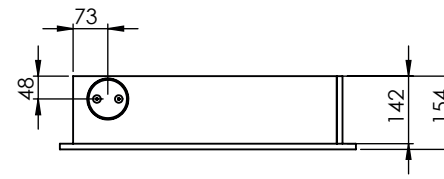
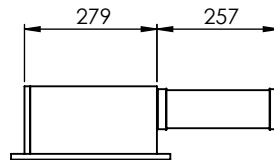
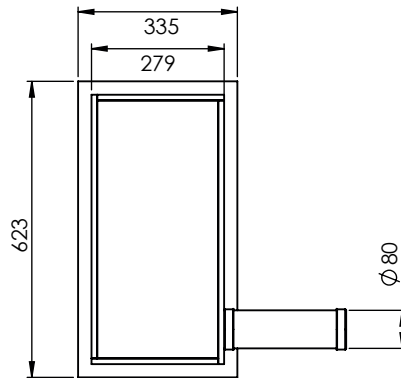
with adjustable installation kit  
 4/5

MEASUREMENTS: CONCRETE BOXES (note: The boxes can't be ordered separately; as they are produced on order basis, price on request). See next page for more about concrete ceiling.

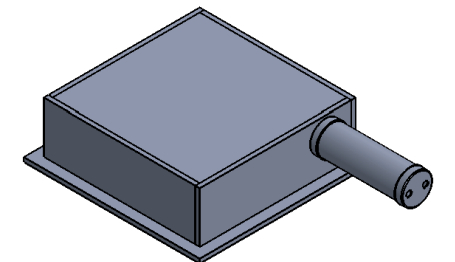
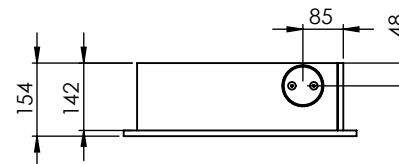
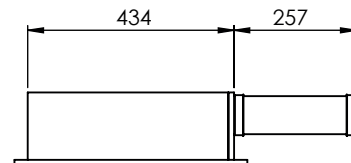
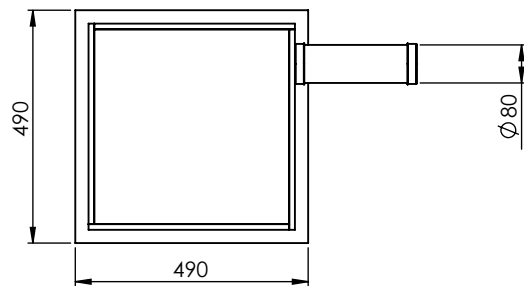
## Measurements for the PORTOFINO 1 LIGHT



## Measurements for the PORTOFINO 2 & 3 LIGHTS



## Measurements for the PORTOFINO 4 LIGHTS



**LET OP:**  
 Lees A.U.B. aandachtig de veiligheidsvoorschriften op pagina 3

**NOTE:**  
 Please read carefully the safety warnings in page 3

"No rights can be derived from the information provided on this Instruction Manual. Information on the Instruction Manual has been compiled with the utmost care and is updated on a continuous basis. Nevertheless Maretti cannot guarantee that all information is free of errors, complete or fully up to date."

11.1811.COLOUR.A  
 11.1812.COLOUR.A  
 11.1813.COLOUR.A  
 11.1814.COLOUR.A

# PORTOFINO AR111

with adjustable installation kit  
 5/5

## MOUNTING INSTRUCTIONS IN CONCRETE CEILING

**1**

**2**

Use the concrete stamp to support the box. You can remove the concrete stamp when the concrete is completely dried out

Concrete stamp

**3**

Remove the construction

**4**

**5**

Put the driver into the PVC tube.

NOTE: See page 3 of the instruction manual for mounting instructions of the fixture and the adjustment kit

Hight depends on the hight of the stucco

**6**

**7**

PLASTER



LET OP:  
 Lees A.U.B. aandachtig de veiligheidsvoorschriften op pagina 3

NOTE:  
 Please read carefully the safety warnings in page 3

"No rights can be derived from the information provided on this Instruction Manual. Information on the Instruction Manual has been compiled with the utmost care and is updated on a continuous basis. Nevertheless Maretti cannot guarantee that all information is free of errors, complete or fully up to date."