



BY ERIC KUSTER



Maretti Lighting
Bolderweg 7

1332 AX Almere
the Netherlands

T +31 (0) 36 532 66 12
F +31 (0) 36 532 17 35

E info@maretti.com
W www.maretti.com

Sophisticated and sexy - typical for both his designs and his personality; Eric Kuster, one of the hottest interior designers of the moment (the interior designer of the moment). With subtle mixes of luxury and comfort and his Metropolitan Luxury style, he focuses on the upscale market, both nationally and internationally. The cooperation with Maretti may be called a perfect symbiosis and is reflected in a line of luxury lighting fixtures.

© Copyright Maretti Projectverlichting.

Our IM was made with the greatest of care. Nevertheless, the colours displayed in the IM may differ slightly from the real colours because of the printing process. Colour, size and range are subject to change. Nothing from this IM may be copied, reproduced and/or published by print, photocopy or in any other way without Maretti Lighting's written permission. All product and design copyrights belong to Maretti Lighting.

GUARANTEE TERMS AND CONDITIONS

The other party should inspect the delivered items immediately upon receipt with regard to its soundness. Entitlements to repair or replacement only exist if the other party

- In the case of visible defects, informs MPV of them immediately.

- In the case of defects that are not visible, informs MPV in writing of the defects, within 2 working days after the day the defects were found, or in all reason could have been found and furthermore demonstrates that the MPV instructions for use, maintenance and operation were followed, whilst the defects are not the consequence of normal wear and tear, misuse, negligence, accident, exceeding the limits prescribed by the MPV or by the legal safety regulations, or, in the case of a repair or change without MPV's consent or the consent of its recognised repairer, there will be no entitlement to repairs or replacement. The parts that have to be replaced must be made available free of charge to MPV. Noncompliance by the other party to one or more of its obligations will release MPV of all its guarantee obligations. In the case of assembly of the other party's own products by Maretti, MPV will release itself from all guarantee stipulations. Moreover, our general delivery terms and conditions are applicable. These can be obtained from Maretti or can be downloaded from www.maretti.com

The installation must be done by a competent installer. Maretti recommends that your (outside) lighting and fixture annually to be inspect and maintain.

D: Für Garantiebedingungen bitte lesen Sie unsere Webseite www.maretti.com
E: Consulte nuestro sitio web para los condiciones de garantía www.maretti.com
FR: Consultez notre site web pour les conditions de garantie www.maretti.com
NL: Voor garantievoorwaarden zie onze website www.maretti.com

11.1781.COLOUR
11.1782.COLOUR

PORTOFINO AR70
with adjustable installation kit
1/5



PLATINUM



CHAMPAGNE



50W	MAX. WATTAGE		INDOOR		ADJUSTABLE INSTALLATION KIT INCLUDED
B15D	SOCKET MAX. 50V AC/DC		2-PINS PLUG & PLAY		CE MARK
	BULB NOT INCLUDED		CABLE 300mm		
	DRIVER NOT INCLUDED		LIGHT TWISTING 45°		

11.1781.COLOUR

11.1782.COLOUR

PORTOFINO AR70

with adjustable installation kit
2/5

LICHTBRON: APART VERKRIJGBAAR / LIGHT BULB: SEPARATE ORDER

ART. NR.	NAAM / NAME	SOCKET	VOLTAGE	WATTAGE	MILIAMPER	KELVIN	LUMEN	CRI	BUNDELHOEK / BEAM ANGLE
21.8220.82	CUSCO 70 LED AR70	B15D	36V DC	5,8W	160mA	2700K	300 lm	Ra97	24°
21.8223.82.A	CUSCO 70 LED AR70	B15D	36V DC	5,8W	160mA	CTA 2000-2700K	300 lm	Ra97	24°

DRIVERS: APART VERKRIJGBAAR / SEPARATE ORDER

ART. NR.	NAAM / NAME	WATTAGE	MILIAMPER	DIMMEN / DIMMING	AANSLUITING / CONNECTION	AANTAL LICHTBRONNEN / NUMBER OF LIGHT BULBS
16.8100.0160.E*	DRIVER P&P	4,8 – 6,7W	160mA	Fase aan- afsnijding / Tronic (L/C)	2m kabel eurostekker	1
16.8100.0160.G*	DRIVER P&P	4,8 – 6,7W	160mA	Fase aan- afsnijding / Tronic (L/C)	2m kabel GST18	1
16.8100.0160.W*	DRIVER P&P	4,8 – 6,7W	160mA	Fase aan- afsnijding / Tronic (L/C)	2m kabel WINSTA	1
16.7000.0160.Z*	DRIVER DALI INTEL P&P	0,4W – 7,2W	160mA	CTA/AM dimbaar	2m kabel excl. prim. connector	1
16.7000.0160.G*	DRIVER DALI INTEL P&P	0,4W – 7,2W	160mA	CTA/AM dimbaar	2m kabel GST18 connector	1
16.7000.0160.W*	DRIVER DALI INTEL P&P	0,4W – 7,2W	160mA	CTA/AM dimbaar	2m kabel WINSTA connector	1
16.7105.0160.G*	DRIVER DALI DUO P&P	2x 8,8W	160mA	CTA/AM dimbaar	GST18 5-polig / 1 DALI adres 2x uitgang	2
16.7105.0160.W*	DRIVER DALI DUO P&P	2x 8,8W	160mA	CTA/AM dimbaar	WINSTA 5-polig / 1 DALI adres 2x uitgang	2
16.7105.0160.Z*	DRIVER DALI DUO P&P	2x 8,8W	160mA	CTA/AM dimbaar	excl. prim. connector / 1 DALI adres 2x uitgang	2

*
E: Europlug
G: GST18
W: Winsta
Z: Geen plug

PLUG & PLAY CABLES (VOOR LED!, NIET VOOR HALOGEEN): APART VERKRIJGBAAR / SEPARATE ORDER

ART. NR.	NAAM / NAME	AFMETINGEN / DIMENSIONS
70.7125.05	LED KOPPELKABEL / LED COUPLING CABLE	L: 50cm 2x0,5mm ²
70.7127.05	LED KOPPELKABEL / LED COUPLING CABLE	L:100cm 2x0,5mm ²
70.7130.05	LED KOPPELKABEL / LED COUPLING CABLE	L:150cm 2x0,5mm ²
70.7135.05	LED KOPPELKABEL / LED COUPLING CABLE	L:250cm 2x0,5mm ²



LET OP: Volg en bewaar deze gebruiksaanwijzing.

- Zorg ervoor dat de netspanning uitgeschakeld is voor installatie, reparatie of onderhoud. (Installatie, reparatie en onderhoud uitsluitend door gekwalificeerde personen).
- Voor reparatie of onderhoud uitsluitend originele delen gebruiken. Probeer het product niet zelf te demonteren en te repareren, onjuiste reparaties kunnen het product beschadigen en elektrische schokken veroorzaken wat tot ernstig letsel kan leiden.
- Gebruik het armatuur alleen binnenshuis.
- Het armatuur niet in vochtige of natte ruimte gebruiken.
- Uitsluitend op het etiket aangegeven lichtbronnen gebruiken.

Wanneer u een spot inbouwt moet u rekening houden met de warmte en dus rekening houden met extra inbouwruimte rond je armatuur om eventuele schade te voorkomen.

De fabrikant aanvaardt geen enkele aansprakelijkheid voor letsel of schade als gevolg van een verkeerde toepassing van het armatuur.
 De fabrikant aanvaardt geen garantie in geval van het niet behandelen van de lampen volgens de richtlijnen van de fabrikant.
 Als er schade aan elektrische onderdelen te vinden zijn, vraag dan een electricien om het te vervangen.

Onderhoud is behoud:

- Een goede instandhouding van het armatuur is sterk afhankelijk van omgevings- en onderhoudsfactoren. Hierop kunnen wij geen invloed uitoefenen.
- Schakel voor de zekerheid de elektriciteit uit!
- Gebruik geen agressieve, schurende of chemische schoonmaakmiddelen.

NOTE: Follow and keep this instructions manual.

- Make sure that the mains voltage is switched off before installation, reparation or maintenance. (Installation, reparation and maintenance only by qualified persons).
- Use only original parts for repairs or maintenance. Never attempt to disassemble, repair or alter the product in any way, improper repairs could damage the product causing electrical shocks which may cause serious injury.
- Use the fixture only indoors.
- Don't use the fixture in humid or wet areas.
- Use only suitable light sources indicated on the label.

Make sure you have at least as much space in your (false) ceiling. It is very important to give enough air cooling to avoid any damage.

The manufacturer accepts no liability for any injuries or damages resulting from the incorrect use or installation of the fixture.
 Any operation performed on the fixture that is not in accordance with instructions will void manufacturer's warranty.
 If you find any damage to the electrical parts, please ask a qualified electrician to replace it.

Maintenance is preservation:

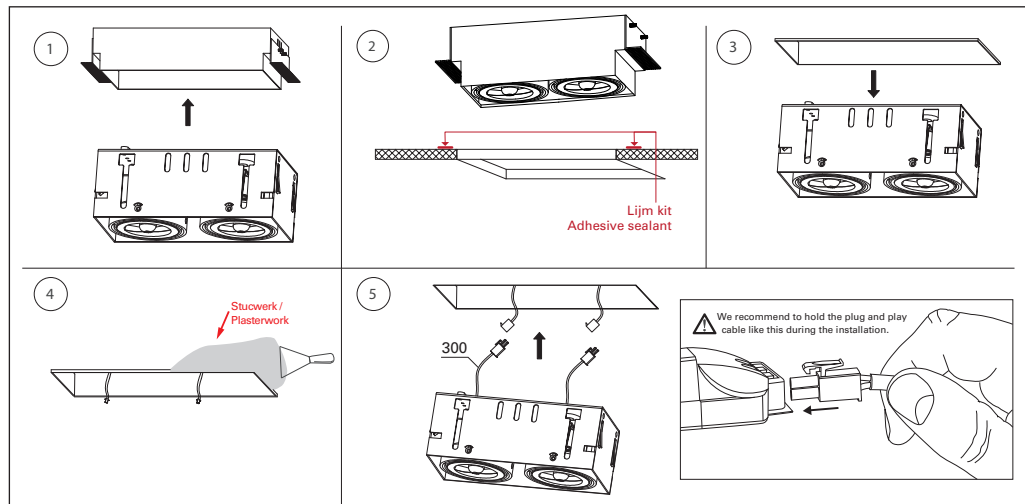
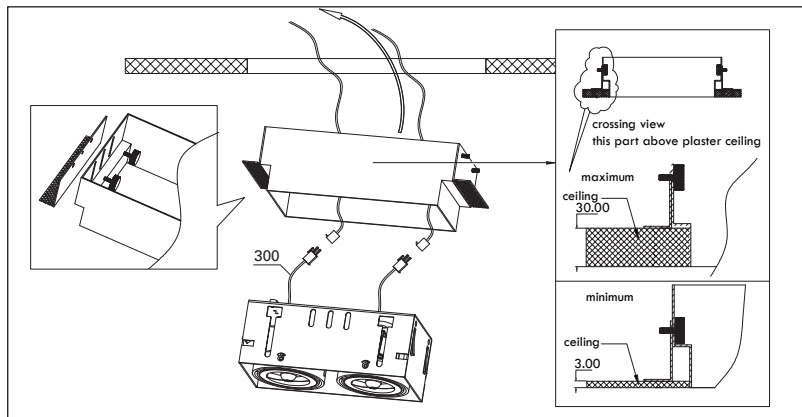
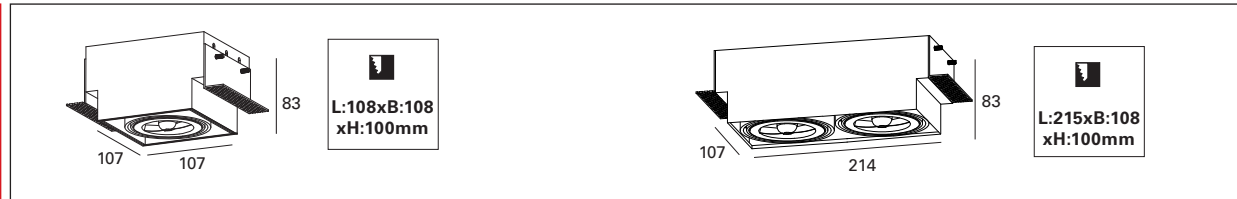
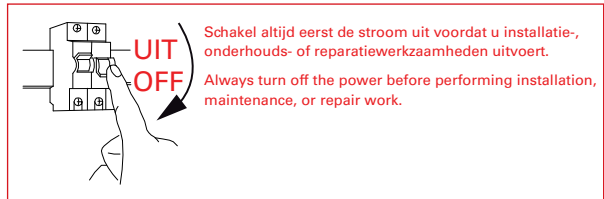
- A good preservation of the fixture is highly dependent on environmental factors and maintenance. We cannot exercise any influence on this.
- Make sure that the mains voltage is switched off before you begin.
- Do not use strong, chemicals or abrasive cleaners.

"No rights can be derived from the information provided on this Instruction Manual. Information on the Instruction Manual has been compiled with the utmost care and is updated on a continuous basis. Nevertheless Maretti cannot guarantee that all information is free of errors, complete or fully up to date."

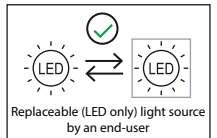
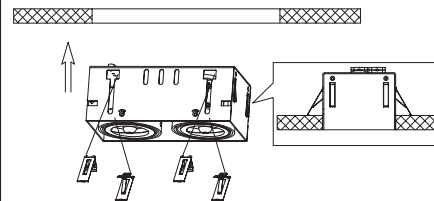
PORTOFINO AR70

with adjustable installation kit

3/5



Mounting: using clips



LET OP:

- Volg en bewaar deze gebruiksaanwijzing.
- Zorg ervoor dat de netspanning uitgeschakeld is voor installatie, reparatie of onderhoud. (Installatie, reparatie en onderhoud uitsluitend door gekwalificeerde personen).
- Voor reparatie of onderhoud uitsluitend originele delen gebruiken.
- Gebruik het armatuur alleen binnenshuis. Het armatuur niet in vochtige of natte ruimte gebruiken.
- Uitsluitend op het etiket aangegeven lichtbronnen gebruiken.

Wanneer u een spot inbouwt moet u rekening houden met de warmte en dus rekening houden met extra inbouwruimte rond je armatuur om eventuele schade te voorkomen. De fabrikant aanvaardt geen enkele aansprakelijkheid voor letsel of schade als gevolg van een verkeerde toepassing van het armatuur. De fabrikant aanvaardt geen garantie in geval van het niet behandelen van de lampen volgens de richtlijnen van de fabrikant. Als er schade aan elektrische onderdelen te vinden zijn, vraag dan een elektricien om het te vervangen.

Onderhoud is behoud:

- Een goede instandhouding van het armatuur is sterk afhankelijk van omgevings- en onderhoudsfactoren. Hierop kunnen wij geen invloed uitoefenen.
- Schakel voor de zekerheid de elektriciteit uit!
- Gebruik geen bijtende, chemische middelen of schurende schoonmaakmiddelen. Gebruik geen bijtende, chemische of schurende schoonmaakmiddelen.

NOTE:

- Follow and keep this instructions manual.
- Make sure that the mains voltage is switched off for installation, repair or maintenance. (Installation, repair and maintenance only by qualified persons).
- Use only original parts for repairs or maintenance.
- Use the fixture only indoors. Don't use the fixture in humid or wet areas.
- Use only suitable light sources indicated on the label.

Make sure you have at least as much space in your (false) ceiling. It is very important to give enough air cooling to avoid any damage.

The manufacturer accepts no liability for any injuries or damages resulting from the incorrect use or installation of the fixture. Any operation performed on the fixture that is not in accordance with instructions will void manufacturer's warranty. If you find any damage to the electrical parts, please ask a qualified electrician to replace it.

Maintenance is preservation:

- A good preservation of the fixture is highly dependent on environmental factors and maintenance. We cannot exercise any influence on this.
- Make sure that the mains voltage is switched off before you begin.
- Do not use strong, chemicals or abrasive cleaners.

"No rights can be derived from the information provided on this Instruction Manual. Information on the Instruction Manual has been compiled with the utmost care and is updated on a continuous basis. Nevertheless Maretti cannot guarantee that all information is free of errors, complete or fully up to date."

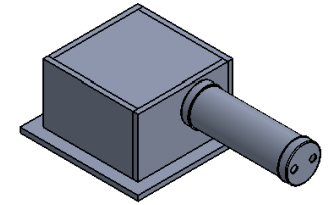
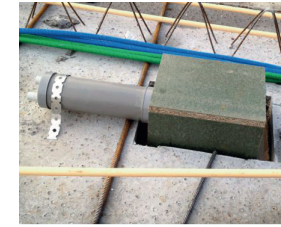
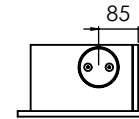
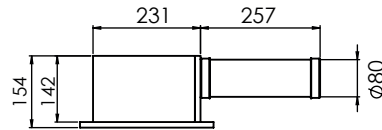
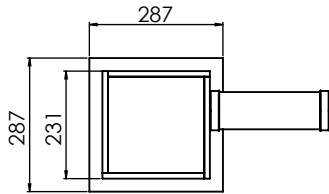
11.1781.COLOUR
11.1782.COLOUR

PORTOFINO AR70

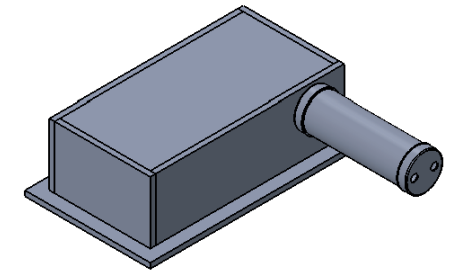
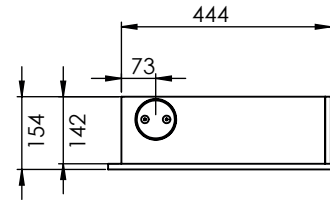
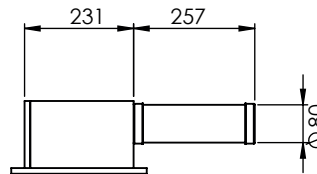
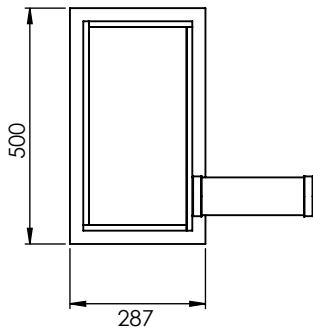
with adjustable installation kit
4/5

MEASUREMENTS: CONCRETE BOXES (note: The boxes can't be ordered separately; as they are produced on order basis, price on request). See next page for more about concrete ceiling.

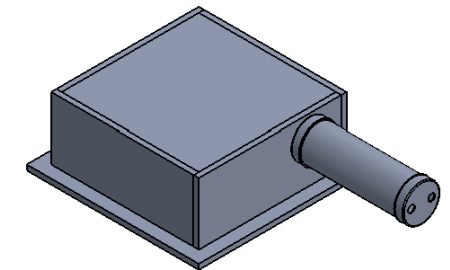
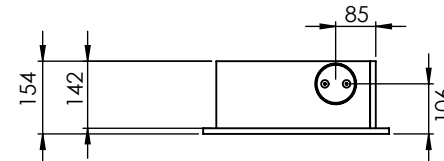
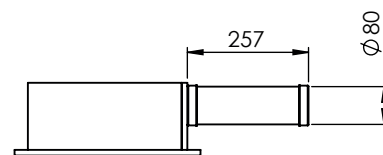
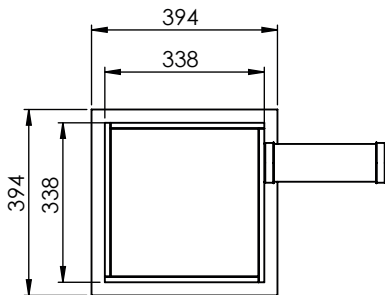
Measurements for the PORTOFINO 70 1 LIGHT



Measurements for the PORTOFINO 70 2 & 3 LIGHTS



Measurements for the PORTOFINO 70 4 LIGHTS



LET OP:
Lees A.U.B. aandachtig de veiligheidsvoorschriften op pagina 3

NOTE:
Please read carefully the safety warnings in page 3

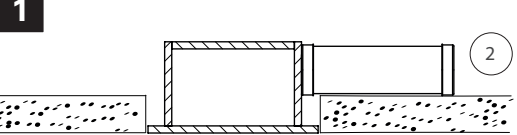
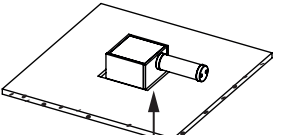
"No rights can be derived from the information provided on this Instruction Manual. Information on the Instruction Manual has been compiled with the utmost care and is updated on a continuous basis. Nevertheless Maretti cannot guarantee that all information is free of errors, complete or fully up to date."

PORTOFINO AR70

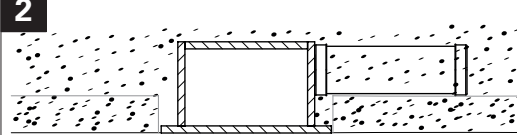
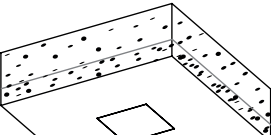
with adjustable installation kit
5/5

MOUNTING INSTRUCTIONS IN CONCRETE CEILING

1





2

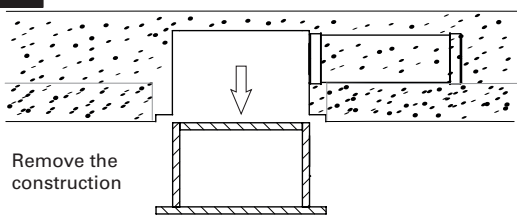



Use the concrete stamp to support the box. You can remove the concrete stamp when the concrete is completely dried out

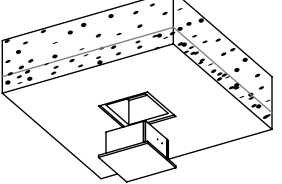
Concrete stamp



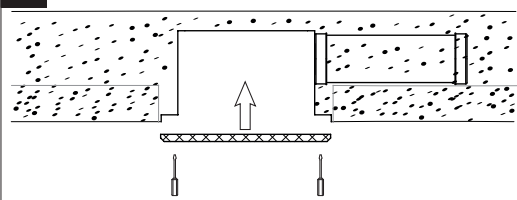
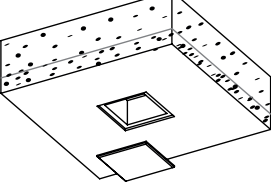
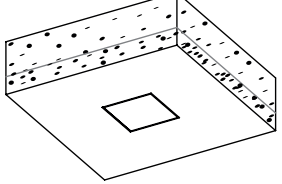
3



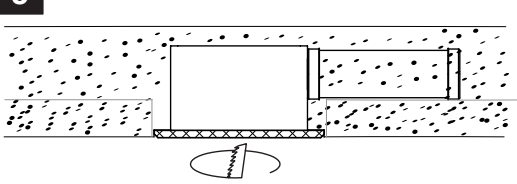
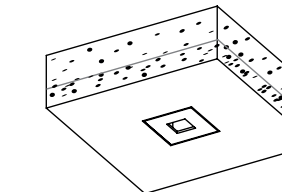
Remove the construction



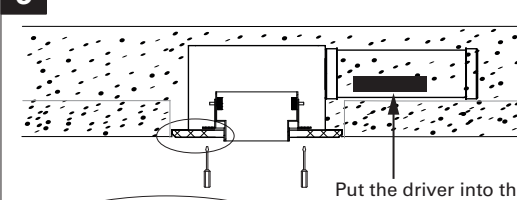
4

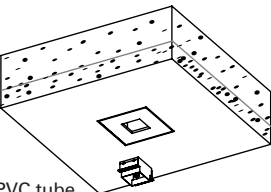
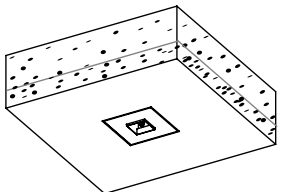
5

6

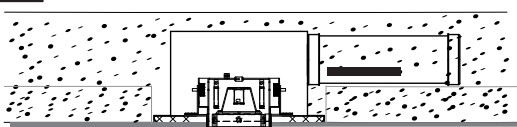
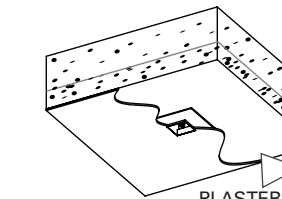


Put the driver into the PVC tube.

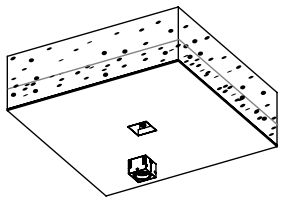
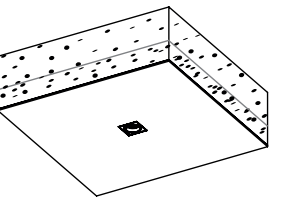



Hight depends on the hight of the stucco

7

PLASTER

NOTE: See page 3 of the instruction manual for mounting instructions of the fixture and the adjustment kit



LET OP:
Lees A.U.B. aandachtig de veiligheidsvoorschriften op pagina 3

NOTE:
Please read carefully the safety warnings in page 3

"No rights can be derived from the information provided on this Instruction Manual. Information on the Instruction Manual has been compiled with the utmost care and is updated on a continuous basis. Nevertheless Maretti cannot guarantee that all information is free of errors, complete or fully up to date."